

Riparian Zones To Manage or Not?

Bill Cook, Forester & Biologist

MICHIGAN STATE
UNIVERSITY

Extension

Does timber harvesting
compromise
riparian values?



Who cares?

It's part of the job!

Expectations exist.



How much harvesting?



How close to water?



Farming, housing, exotics,
climate change, neglect . . .



. . . pose greater threats
than timber harvesting.



Are there differences
among forest types?



*How much variability is
there among different
riparian systems?*





What are riparian “values”?



**Do guidelines serve to
protect these values?**



Water quality? Yes.
Habitat integrity? Probably.
Plant diversity? Maybe Not.



Values? Results?

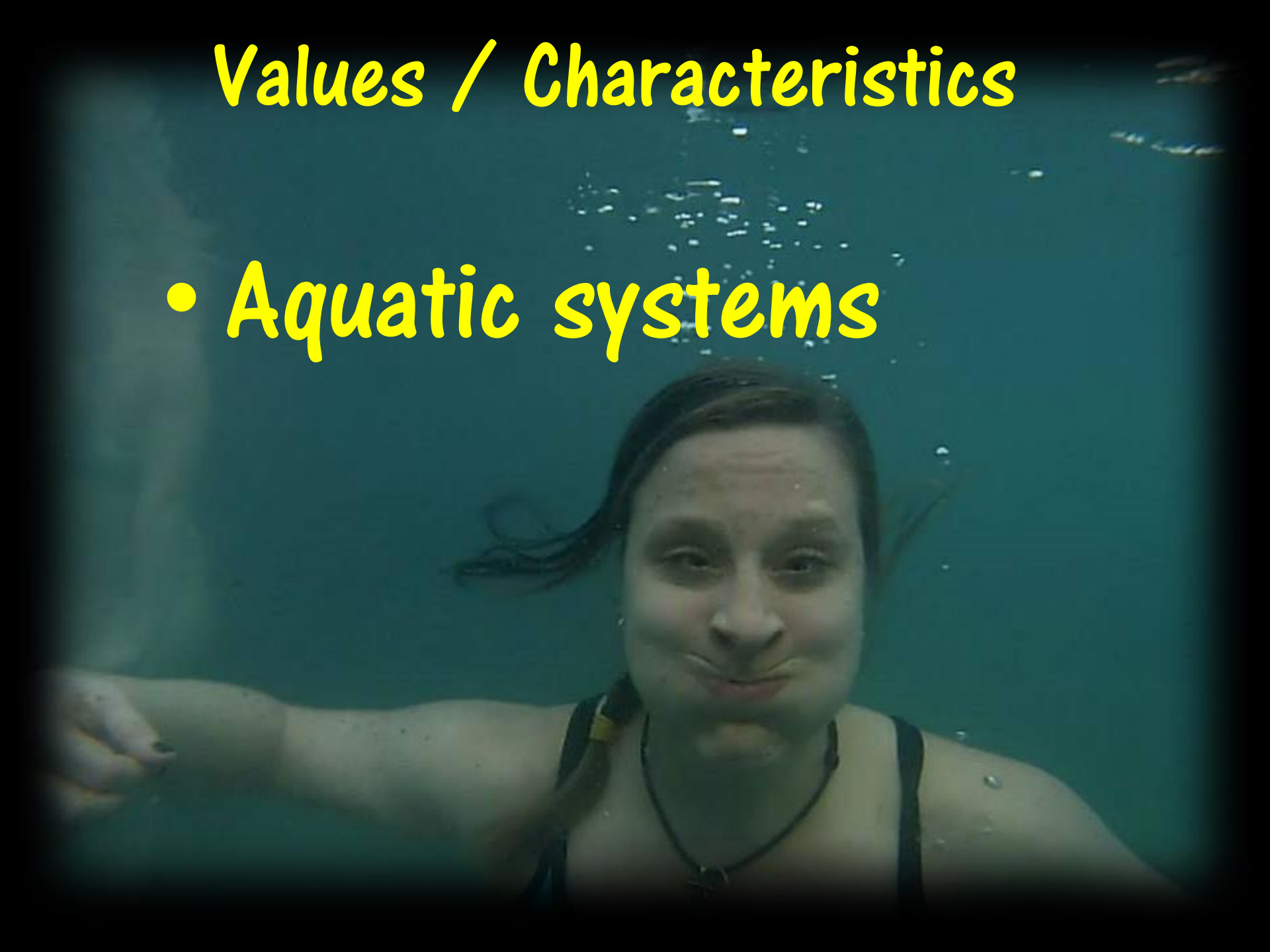


RMZ values and characteristics



Values / Characteristics

- Aquatic systems



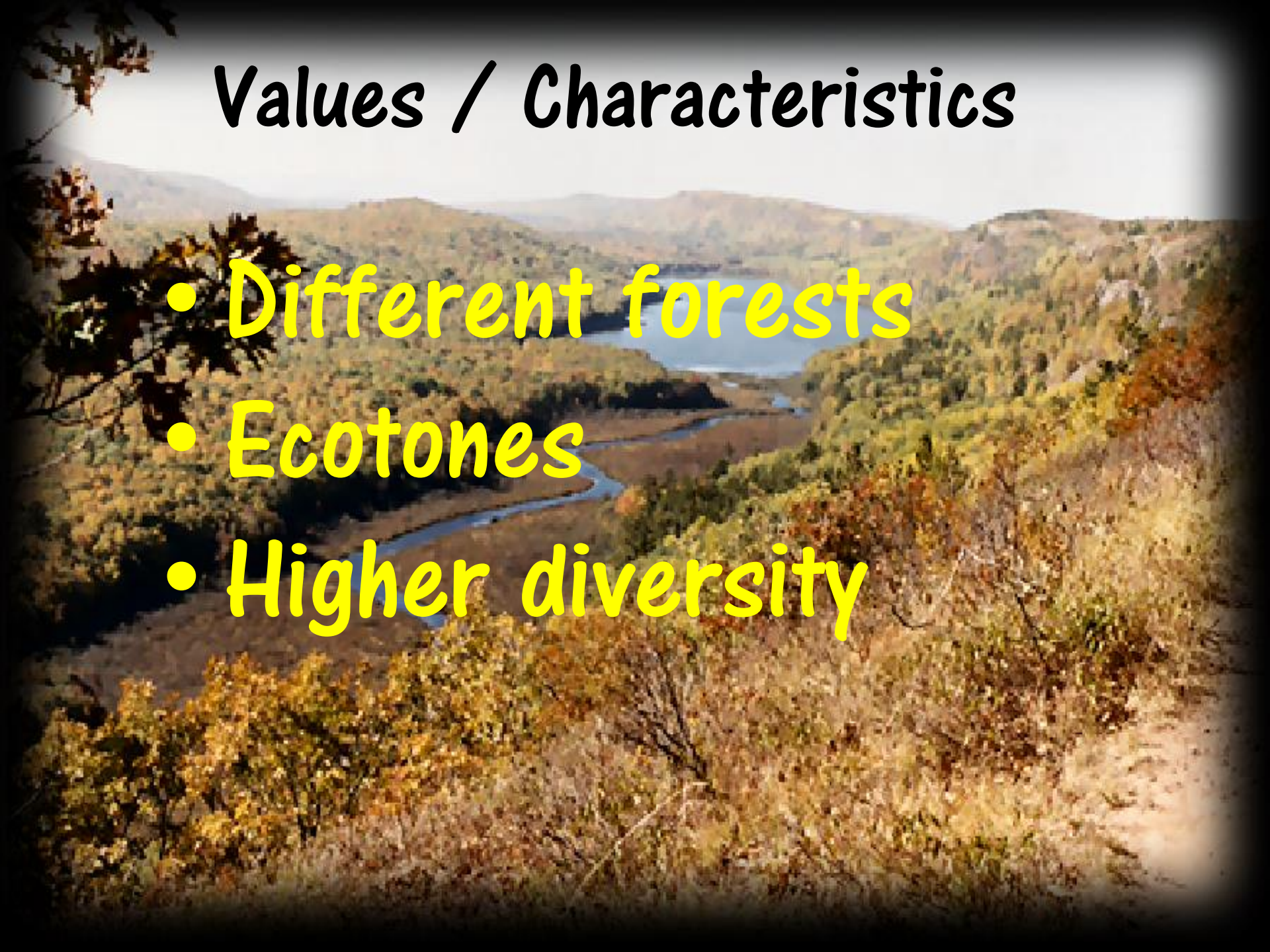
Values / Characteristics

- Soil hydrology



Values / Characteristics

- Different forests
- Ecotones
- Higher diversity



Values / Characteristics

- 80% TNEs use RMZs



Values / Characteristics

- 10%-40% of MN forest within 200 feet of open water



Values / Characteristics

- Travel corridors



Values / Characteristics

- Fishing
- Camping
- Hiking
- Canoeing
- High visual quality





Practices Maintain Conifers



Practices Promote Later Succession



Practices
Minimize
Ground
Damage

Practices Retain Snags & CWD

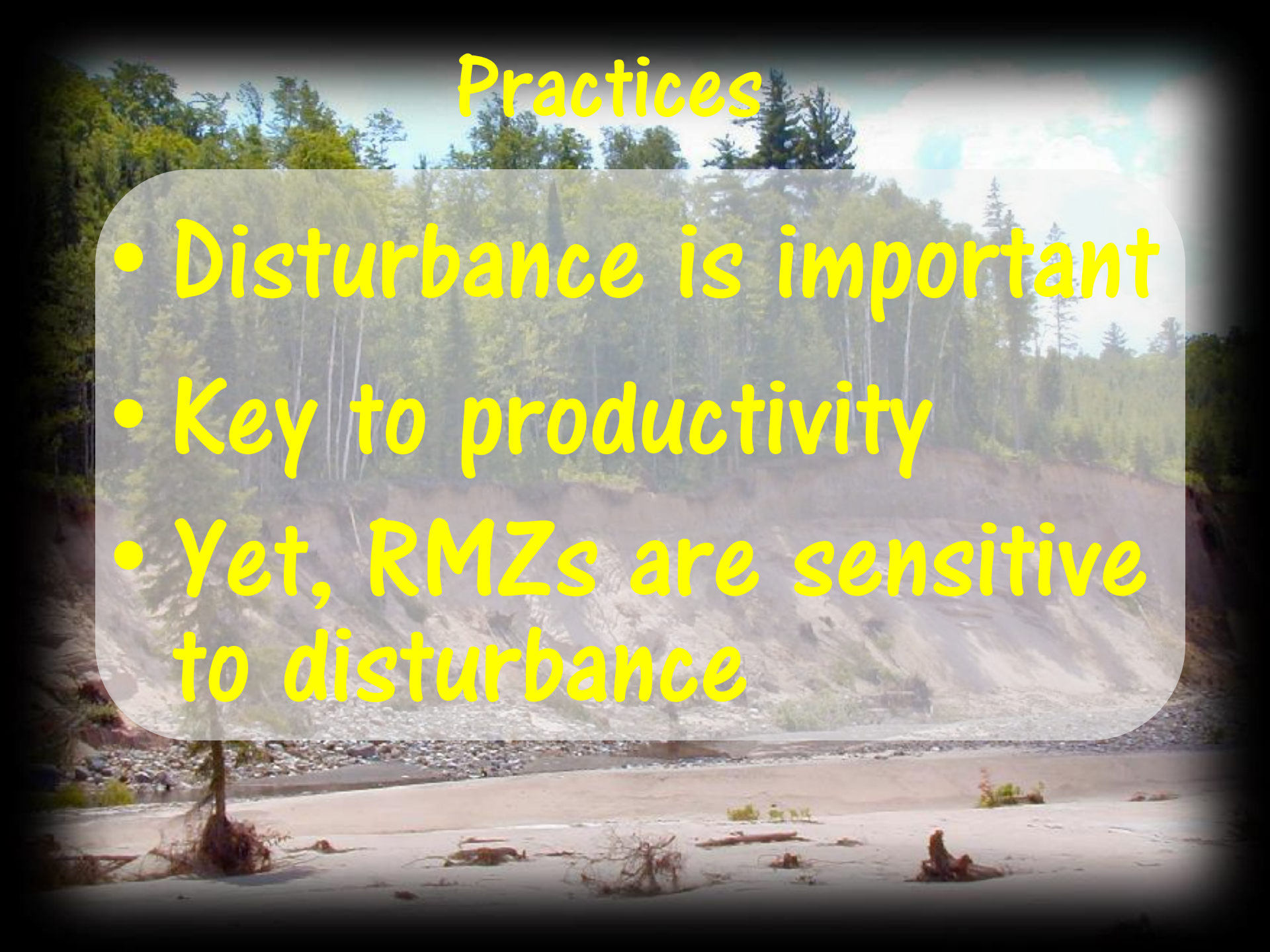


Practices

- Maintain conifers
- Promote later succession
- Minimize ground damage
- Retain snags & CWD

Practices

- Disturbance is important
- Key to productivity
- Yet, RMZs are sensitive to disturbance



Practices

- Multiple “zones”
- Variable retention based on RMZ structure



Practices

- Thinning > future CWD



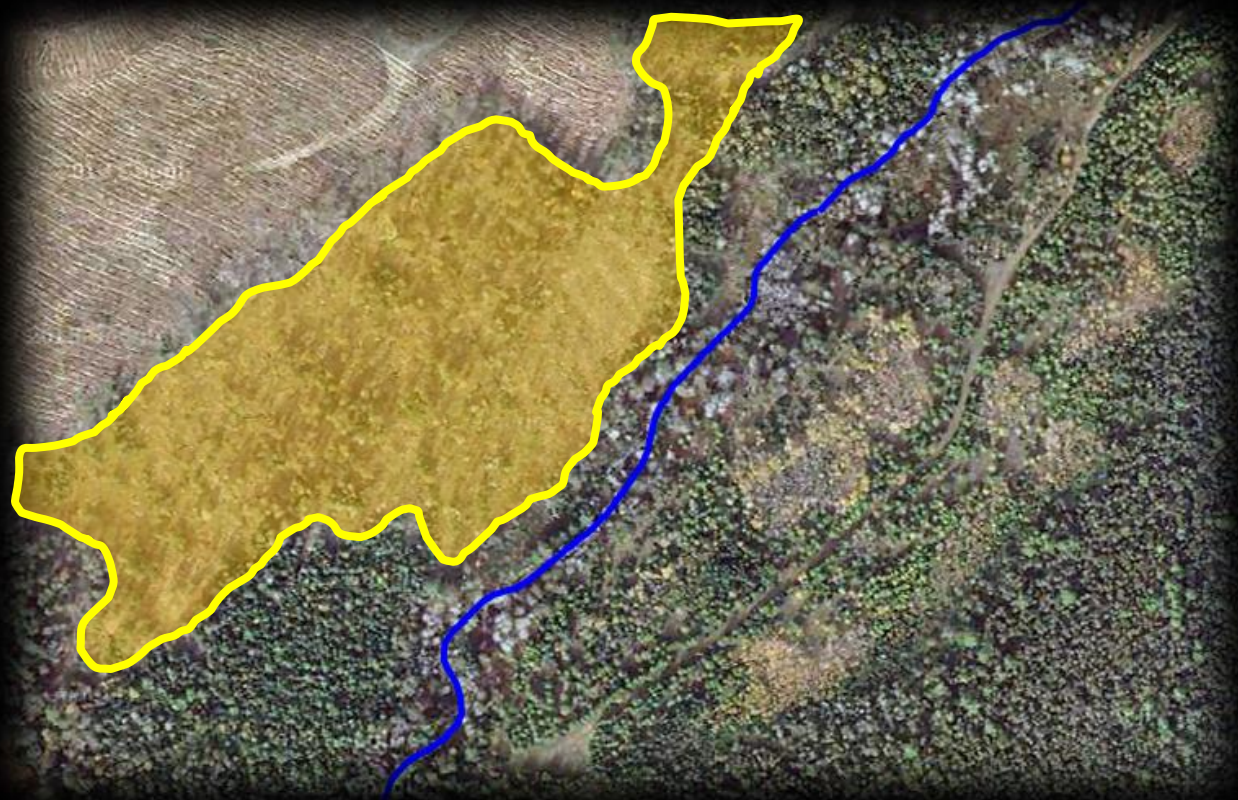
Practices

- Can also promote brush and exotic species



Practices

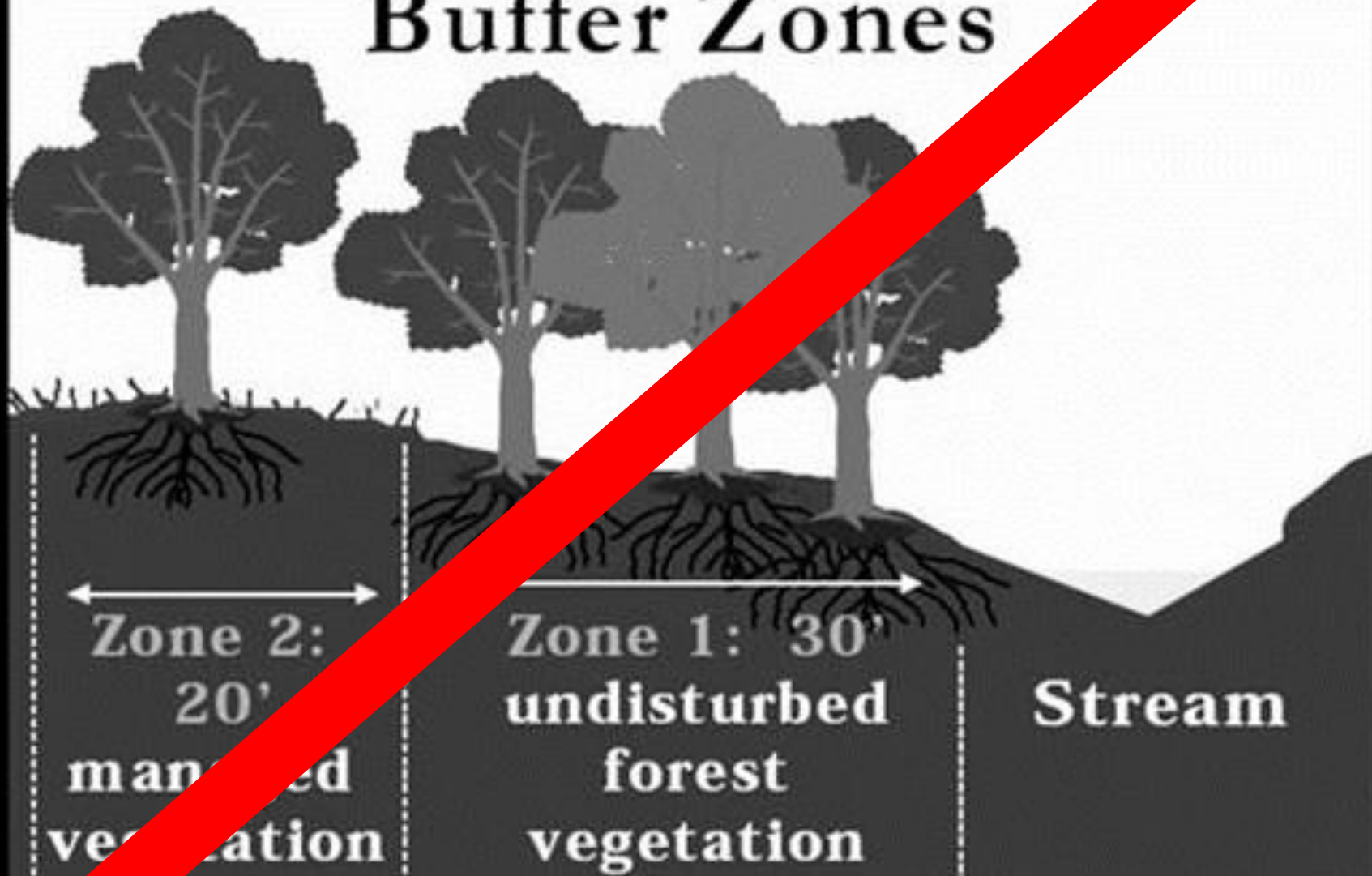
- Streams unaffected by clearcuts outside RMZ



Not So Good Practices

- No-cut buffers (usually)
- Arbitrary distances
- Soil rutting/compacting

Buffer Zones



Not So Good Practices

- RMZs cannot replace BMPs outside RMZ



Not So Good Practices

- “Light-tight” streams



Not So Good Practices

- *Slash in water*



Wildlife That Use RMZs

Who doesn't?

RMZs have higher diversity.

Seasonality.

Part of habitat needs.

Preferences vs. requirements.

Bats!

- Rough, wolfy trees and snags
- Cannot easily ID a roost tree
- Includes the Northern Long-eared



Other Mammals

- Fishers
- Otters
- Mink & other weasels
- Lynx in quality hare habitat
- Beavers (problems!)
- Corridors & water access



Turtle Notes

Clearcut areas warm sooner but get colder during the winter.

- Snappers, painted seek sunny, moist sites . . .
- Nests in June/July, warmer nests = more females
- Wood turtles special concern . . . reduced stand density may assist summer forays into RMZs.
- Their biggest problems are wetland loss and road-kill. NOT loss/modification of RMZs.



Amphibian Notes

- Vernal ponds, CWD important
- Prefer cool, moist woodlands, so RMZ disturbance not so great.
- Although, CWD in open areas may be more important than the canopy.



More Amphibian Notes

- Salamanders use RMZs
- Not so much toads & frogs
- Mudpuppy, blue-spotted, spotted, central newt, red-backed, four-toed, peepers, wood.



Special Bird Species

Yellow-throated Warbler

Prothonotary Warbler

Cerulean Warbler

Hooded Warbler

Louisiana Waterthrush

Acadian Flycatcher



More Bird Notes

Raptor Nests: Coopers, Red-shouldered

Woodpeckers

Wood Ducks

Merlins



OK. It's over now.

