

A photograph of a forest stream. The water flows over moss-covered rocks, creating small rapids. Large, thick tree trunks frame the scene on either side. The forest floor is covered in fallen leaves and more moss. The lighting is soft, suggesting a shaded forest environment.

THE BIG LAND DEAL

The Nature Conservancy
The State of Michigan
The Forestland Group

The Nature Conservancy



The mission of The Nature Conservancy is to preserve the plants, animals, and natural communities that represent the diversity of life on Earth by protecting the lands and waters they need to survive.



The Nature Conservancy Works in over 30 Countries



Since 1951 we've protected more than 119 million acres of land and 5,000 miles of rivers worldwide — and we operate more than 100 marine conservation projects globally.

45 employees in Great Lakes – Michigan Office

Offices in:

Lansing

Grand Rapids

Gaylord

Marquette

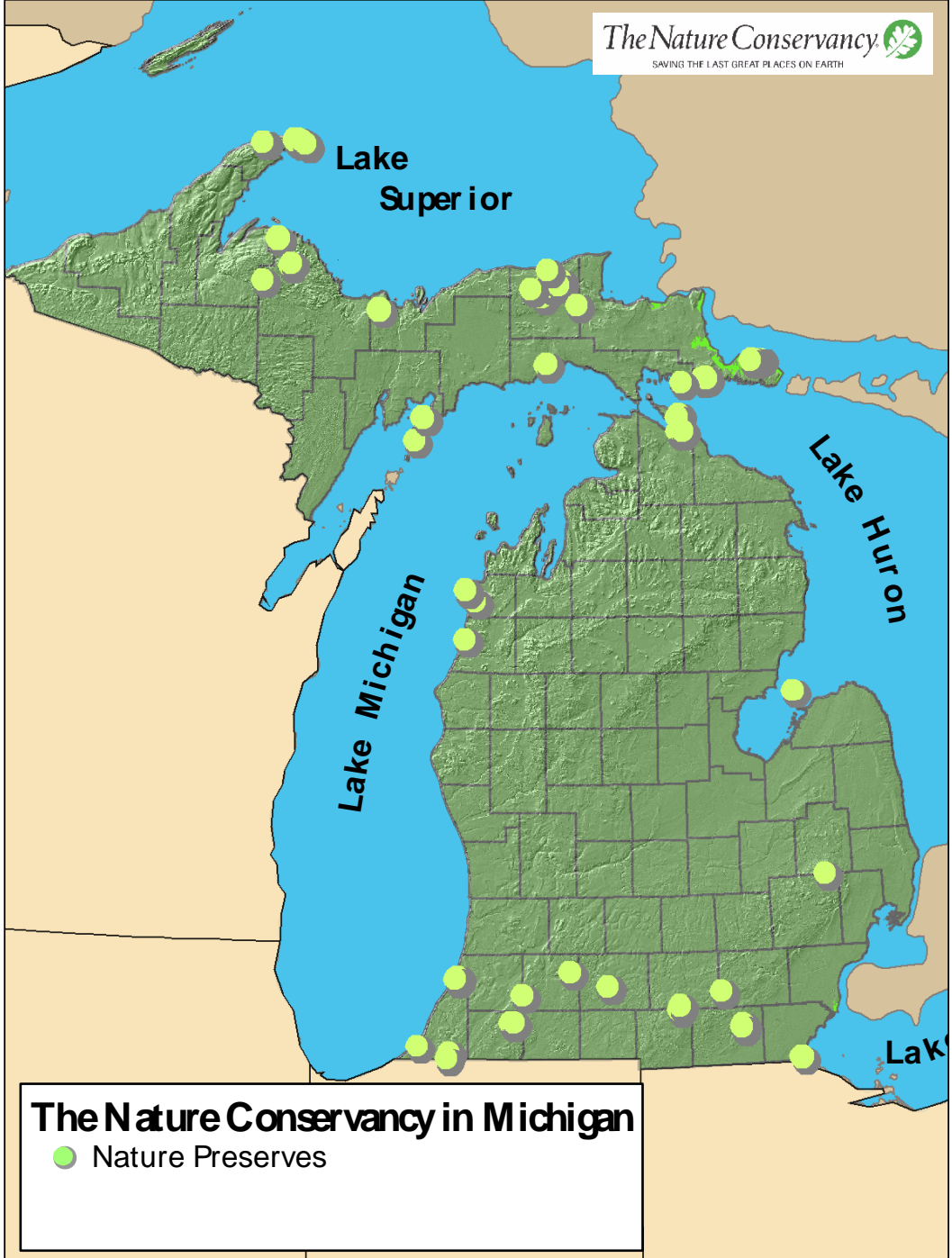
Chicago

We are a 501c3 non-profit supported primarily by member donations and grants – we are not federally funded (except for grants).

Shift in Emphasis

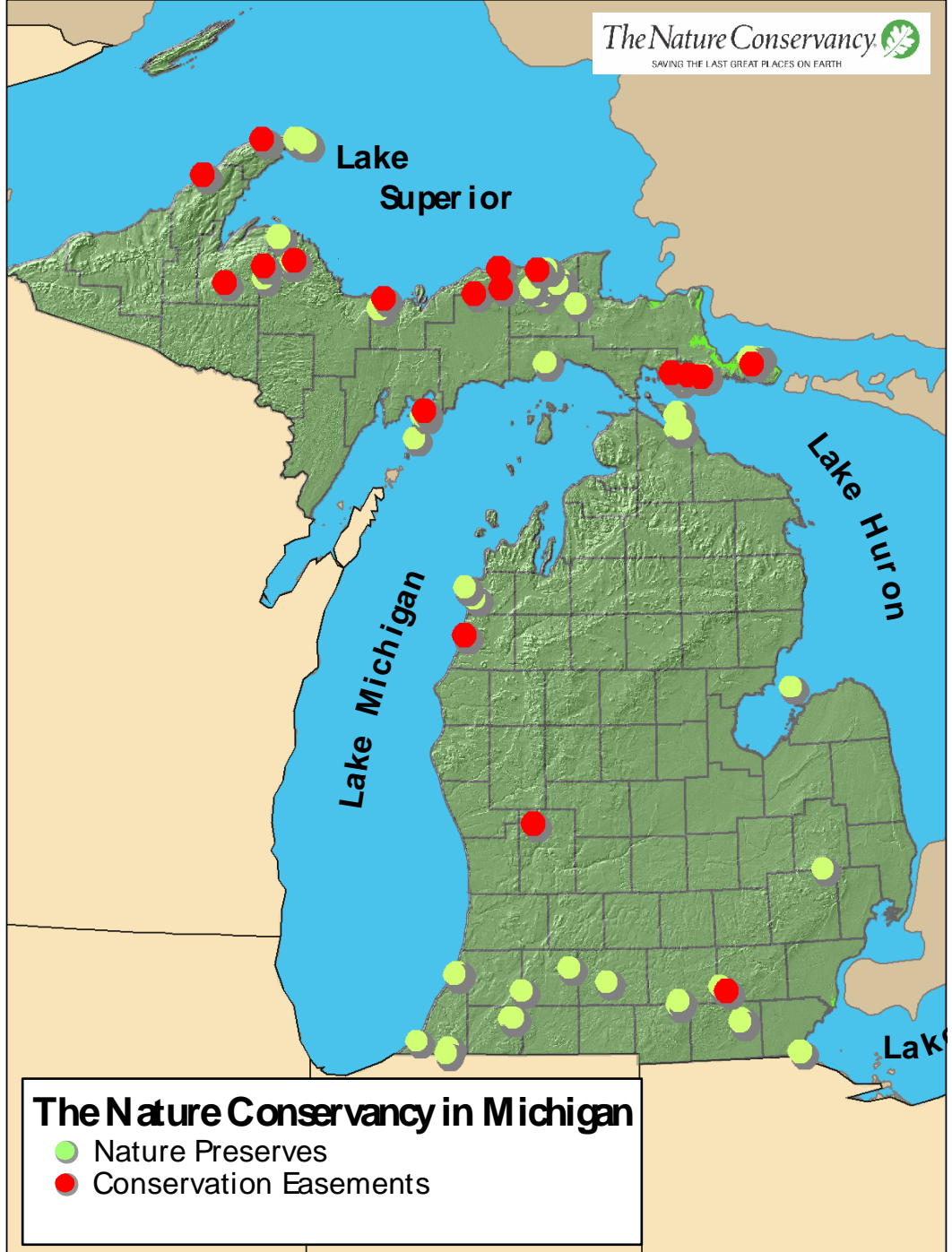
**Protecting nature, for
people today and future
generations.**





The Nature Conservancy in Michigan

 Nature Preserves




The Nature Conservancy in Michigan
● Nature Preserves
● Conservation Easements

Laughing Whitefish Preserve



Laughing Whitefish Lake Preserve

Welcome to Laughing Whitefish Lake, a piece of Upper Peninsula forest complete with natural beauty and more than 100 years of history! This property was donated to The Nature Conservancy by Phyllis Reynolds in 1993 in memory of her husband, Max Reynolds, nephew of George Sbriras III.




"These words were the first of the short reports, and the reason is historical. The boat shown in a 1918 photo is the same as the one that was used by George Sbriras III in the World's Fair in St. Louis."

Don't miss this!
The first photo of a person standing on a wooden platform overlooking a lake at Laughing Whitefish Lake is from the World's Fair in St. Louis Exposition and the World's Fair in the World's Fair in St. Louis.

George Sbriras III first visited this area in 1870 at the age of 11. Raised in Pittsburgh, Pennsylvania, he lived and breathed the effects of a booming industrial economy. Summer vacations to the Upper Peninsula wilderness were an escape from the hectic and grimy life in the city. As an adult, he worked in Pittsburgh where he became a renowned lawyer, though his heart longed for the North Woods. In 1907, he became a member of Congress. With his love for nature, he had a great influence in the development of conservation legislation such as the Migratory Bird Law of 1913 and Michigan's first gun law, the Sbriras gun law, which passed in 1925.

A hunter in his younger days, he later exchanged his gun for a camera. His ingenuity and inventiveness in photography made him world-famous. He was the first person to successfully photograph wildlife at night. His photographs were published by The National Geographic Society, and can also be seen in his two-volume work entitled, "Hunting Wildlife with Camera and Flashlight."


Just as Sbriras explored these woods and shores looking for wildlife to capture on film, we encourage you to venture on this short trail through nature and history.




Laughing Whitefish Lake Preserve

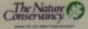
As you walk back on the open trail that was once a logging road, note how the forest community looks. How many different sizes of trees do you see? How many different species of trees do you see? Does this forest look different than the size and type of forest along the river?

Anyone of us can learn to be more perceptive in the natural world and notice both the large and small features. As an outdoor photographer and adventurer, George Sbriras III noted many natural features, and we hope this visit may cause you to increase your perception of our natural world.



George Sbriras III

To reach the parking lot, continue straight (northward) along this open trail. The trail will end perpendicular to the one you began on. Then, take a left (westward) to head back across the bridge and to the parking lot.




Tool Box of Conservation

Buy or donated land that we keep as
Preserves.

Own CFA land that we manage for
timber. = RESERVE

Assist State and Federal Agencies in
acquiring land.

Assist Townships/Cities in acquiring
land.

Conservation Easement

A conservation easement is a voluntary legally binding agreement between a landowner and a qualified land trust or government entity that permanently limits uses of the land in order to protect ecological, historic, or scenic resources. A conservation easement allows a landowner to retain ownership while restricting some of those rights in order to protect the property's conservation values.



Northern Great Lakes Forest Project



Porcupine Mountain State Park

Lake Superior

Pictured Rocks National Lakeshore

Tahquamenon Falls State Park

WISCONSIN

Seney National Wildlife Refuge

Lake Huron

Lake Michigan

Legend

- Northern Great Lakes Forest Project
 - Working Forest Conservation Easement
 - Fee Land - The Nature Conservancy
- State Conservation and Recreation Lands
- Federal Conservation and Recreation Lands
- Outstanding Natural Resource Areas
- Counties

- Purchase and Sale Agreement includes 271,124 acres across 7 counties:
 - 247,806 acres working conservation easement
 - Land owned and managed by The Forestland Group, LLC
 - Easement acquired by The Nature Conservancy and transferred to the State of Michigan
 - 23,318 acres of fee land
 - Land owned and managed by The Nature Conservancy
- Land remains on local tax rolls.
- Restricted for future development and use under a permanent, binding conservation easement.
- Allows sustainable forestry to continue while permanently protecting the biological integrity of the land and water.
- Guaranteeing public access and timber access for this generation and generations to come.

State of Michigan




Two Governors played critical roles

The Forestland Group



THE FORESTLAND GROUP, LLC



enter the site here 

Copyright © 2000 The Forestland Group, LLC. AllRights Reserved

The Forestland Group, LLC (TFG) acquires and manages timberland investments for institutions, families, and individuals.

The firm currently manages approximately 3.4 million acres in 20 states.

Funding (\$58 million project)

\$15 - 26 million Public funding - no direct cost to Michigan

- Michigan Natural Resources Trust Fund

 - \$10 million (acquire Easements 1, 2); \$ 5 million appropriated for Easements 4 and 5; expected additional appropriation of \$1 million

- USDA Forest Legacy Program

 - \$1.9 million pending for Easement 4; additional \$ expected for Easements 5 and 6

\$32 – 43 million Private funding

Generous contributors to date

- Charles Stewart Mott Foundation

- W. K. Kellogg foundation

- Kresge Foundation

- Herbert H. & Grace A. Dow Foundation

- Harry A. & Margaret D. Towsley Foundation

- Carls Foundation

- Frey Foundation

- Wege Foundation

- Rollin M. Gerstacker Foundation

- Estate of Isotta Cesari

- Estate of W. Powell Cottrille

- Seevers Family Foundation

Forest Legacy

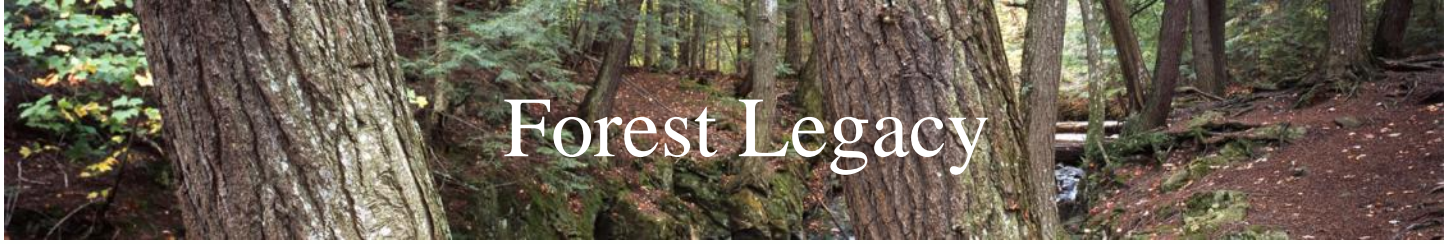


As part of the funding for CE's 4-6, the State of MI secured \$9.5m through the Forest Legacy Program over a 4 year period (2007-2010):

- \$2m in 07,
- \$3.5 in 08,
- \$2m in each of years 09 and 10.

These funds were matched by Trust Fund in the amount of \$6.1m

TNC kicked in land match value (CE3) of \$7.5m.



Forest Legacy

Funds secured thru the Forest Legacy helped secure the CE on 151,900 acres out of the 248,800 total acres eased.

SUMMARY:

Michigan DNR, Trust Fund \$ (over 5 years): \$16,100,000

USFS Forest Legacy (over 4 years): \$9,500,000

Private Sector (Foundations, individual donors): \$13,000,000

*Excludes acquisition of 23,500 acres of fee land (\$13,000,000) in the Two Hearted River Watershed, paid for by private sector donation.

What does this mean for the Upper Peninsula?

- The Northern Great Lakes Forest project is the biggest conservation project in Michigan history for both the State and The Nature Conservancy.
- Helps protect thousands of timber and tourism jobs.
- Keeps private lands on the tax rolls.
- Improves and permanently protects public access to the lands and waters.
- Links more than 2.5 million acres of protected public and private areas into a contiguous landscape of woods and waters.

Important Buffer

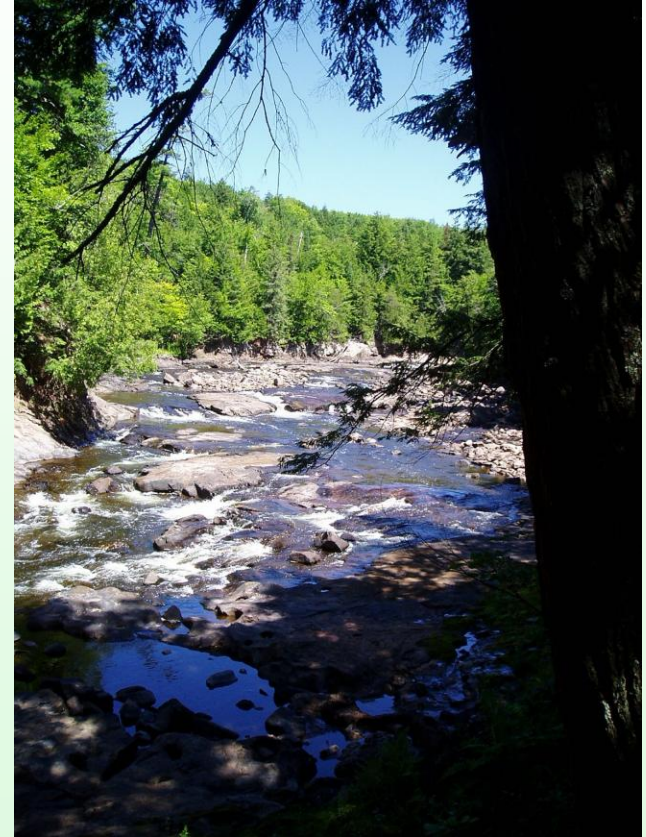
The project creates a buffer to state and national lands including:

- 20,000 acres to Pictured Rocks National Lakeshore
- 10,000 acres to Tahquamenon Falls State Park
- 10,000 acres to Porcupine Mountains Wilderness State park
- 50,000 acres of watershed protection and buffer to Seney National Wildlife Refuge
- 30,000 acres to Hiawatha National Forest
- 27,000 acres to Ottawa National Forests and
- 100,000 acres to State Forest lands.

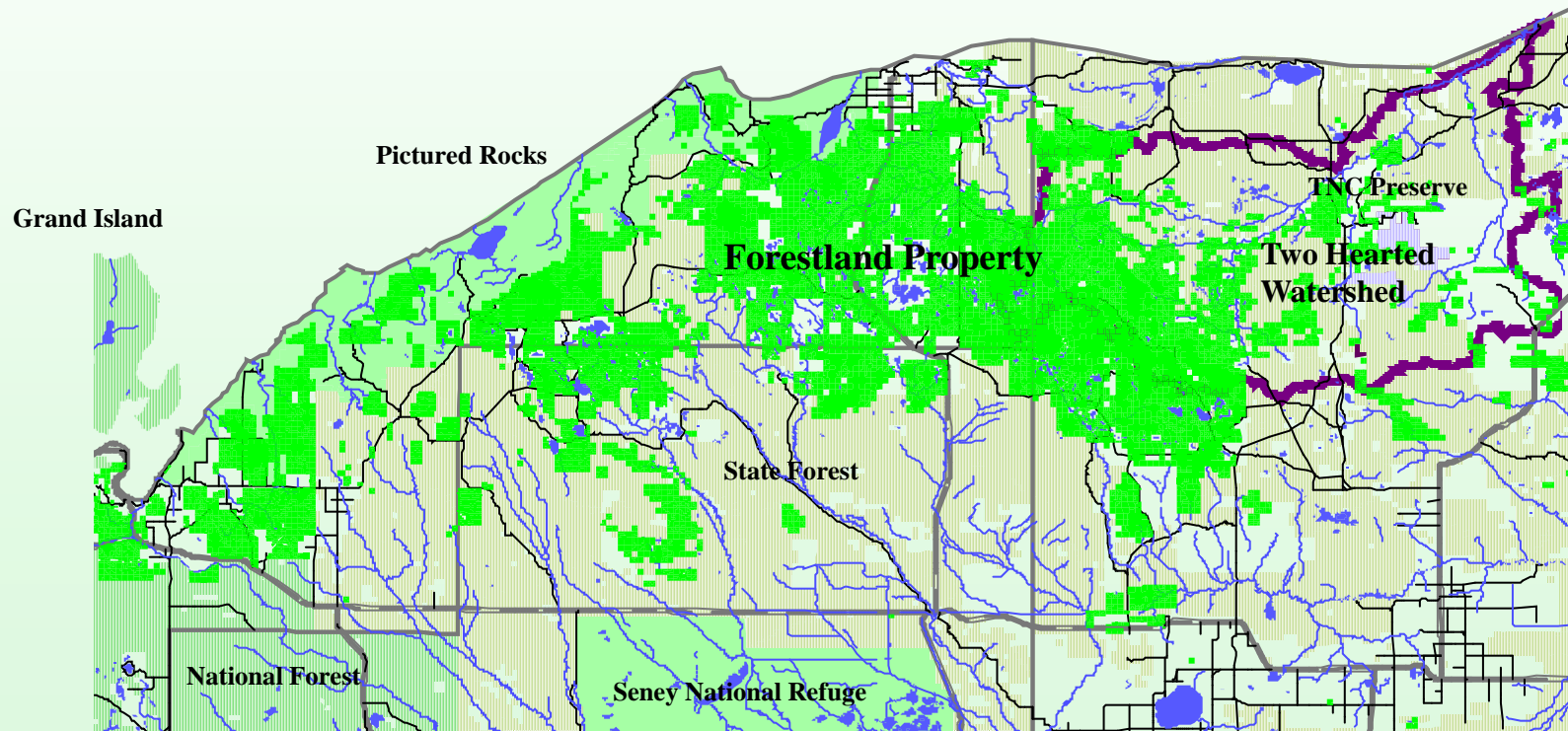
How many lakes and rivers are protected in the deal?

More than 70 primary lakes (greater than 10 acres) and 230 secondary lakes and ponds are protected by the Big Deal.

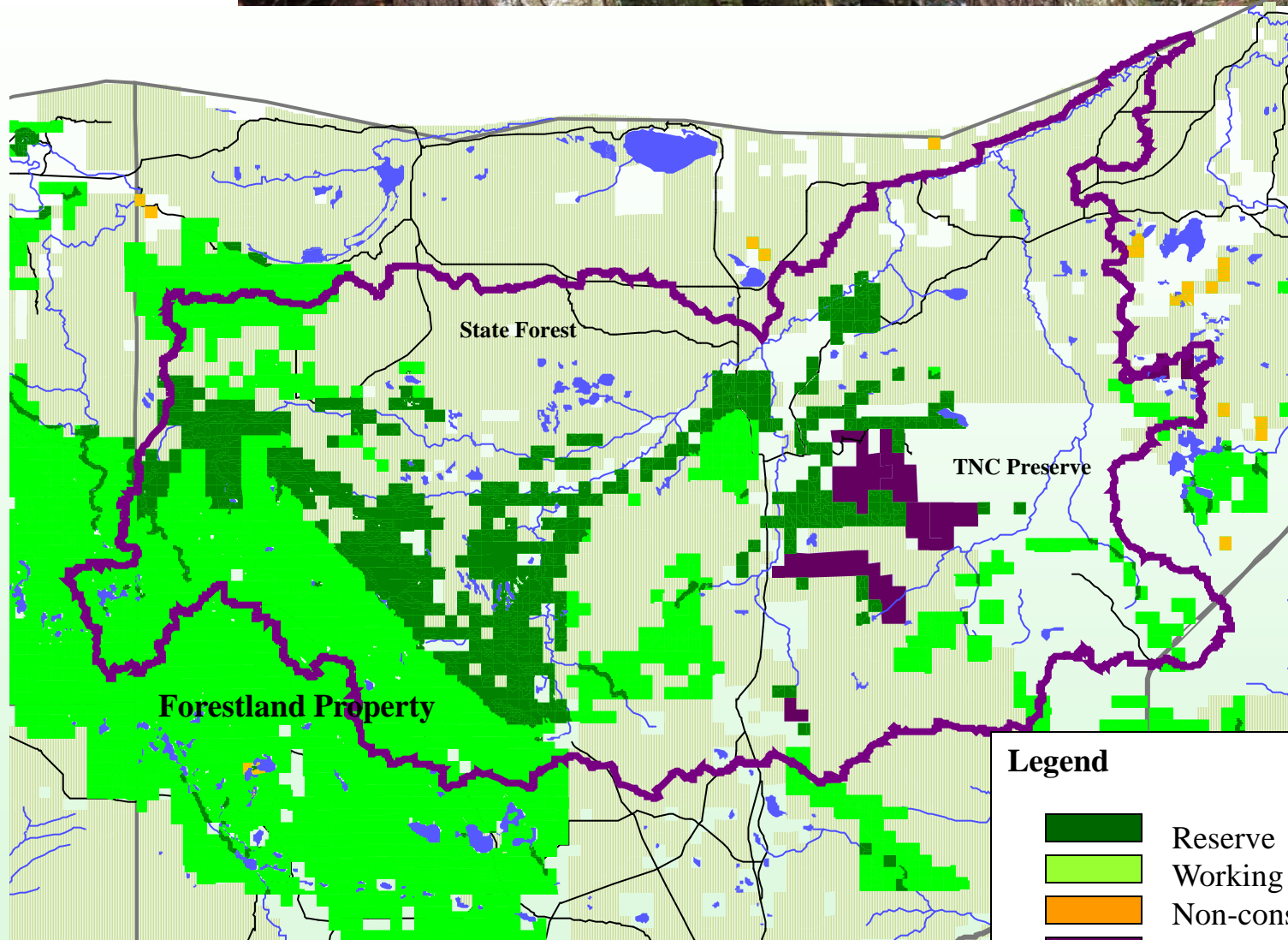
The project also protects 192 miles of Class I trout streams, including the Big Two Hearted River (designated a Michigan Natural River) and the Presque Isle River (designated a National Scenic River), as well as 160 miles of additional riparian habitat along major rivers and tributaries (roughly 516 miles total).







Grand Island to Two Hearted River Central Section of Property



Two Hearted River Watershed

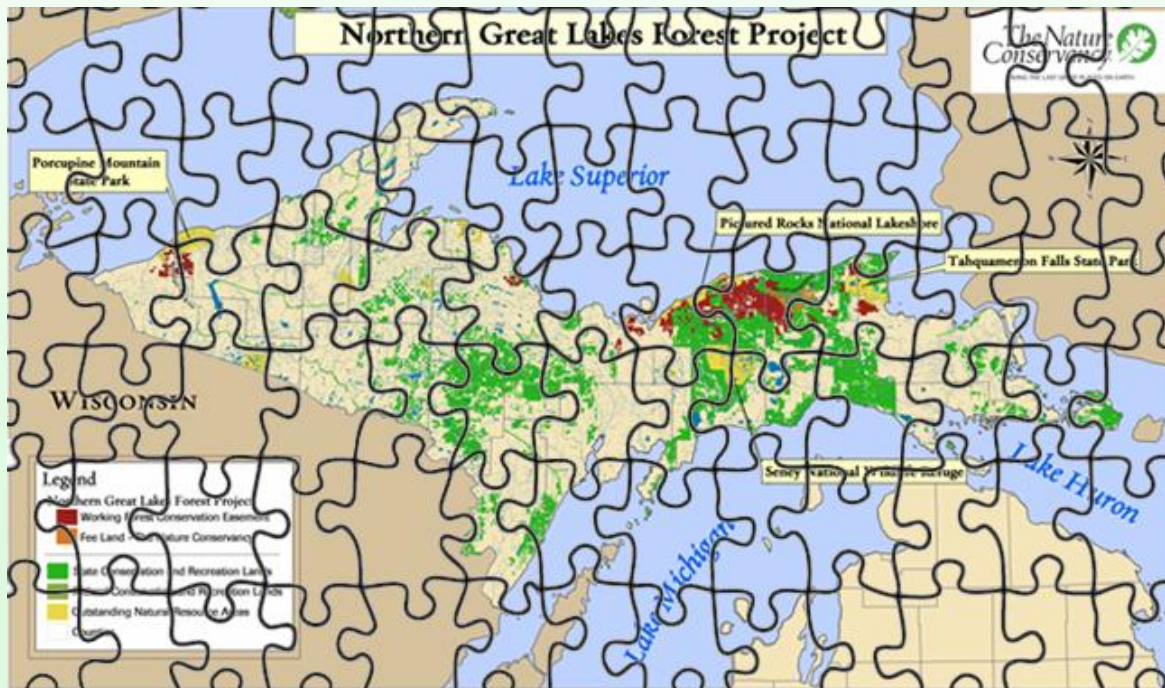


Legend

-  Reserve
-  Working Forest
-  Non-conservation
-  TNC Preserve

Filling in the Pieces

Altogether, these lands fill in the missing pieces of a conservation puzzle by connecting more than 2.5 million acres of state and federally protected forest and natural areas across the Upper Peninsula.



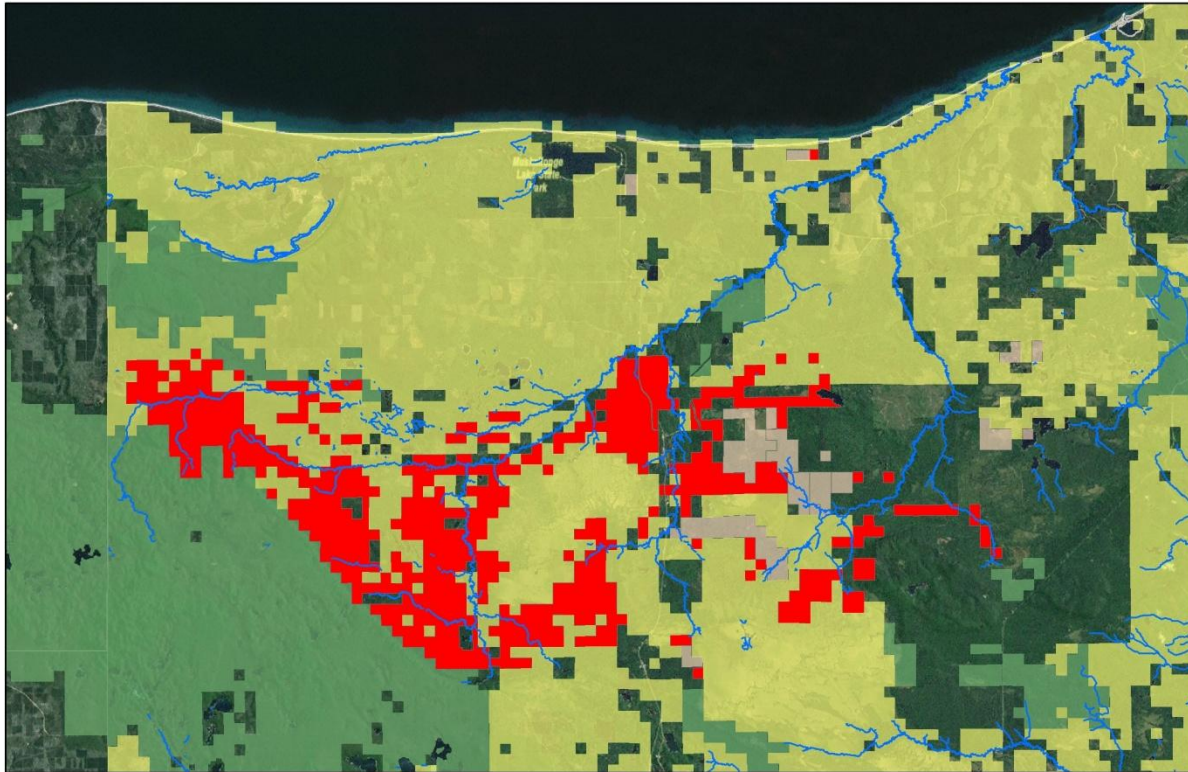


Jobs?

- The project land produces 10% of the timber harvested annually in the UP and 5% statewide.
- According to an economic impact assessment commissioned by The Nature Conservancy and conducted by Public Sector Consultants, the 271,000 acres covered by the agreement account for \$200 million of associated economic activity each year and support 3,000 total jobs.

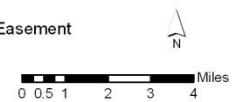


Our Ownership



Legend

- Two Hearted River Forest Reserve (23,300 acres)
- Working Forest Conservation Easement
- TNC Preserves
- DNR

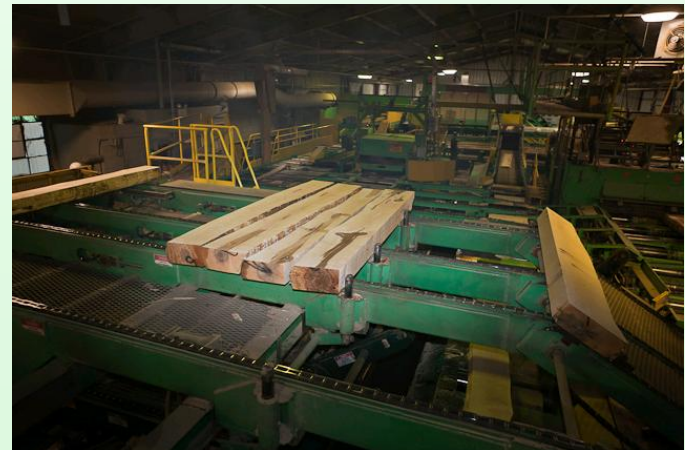


TNC Manages 23,000 acres

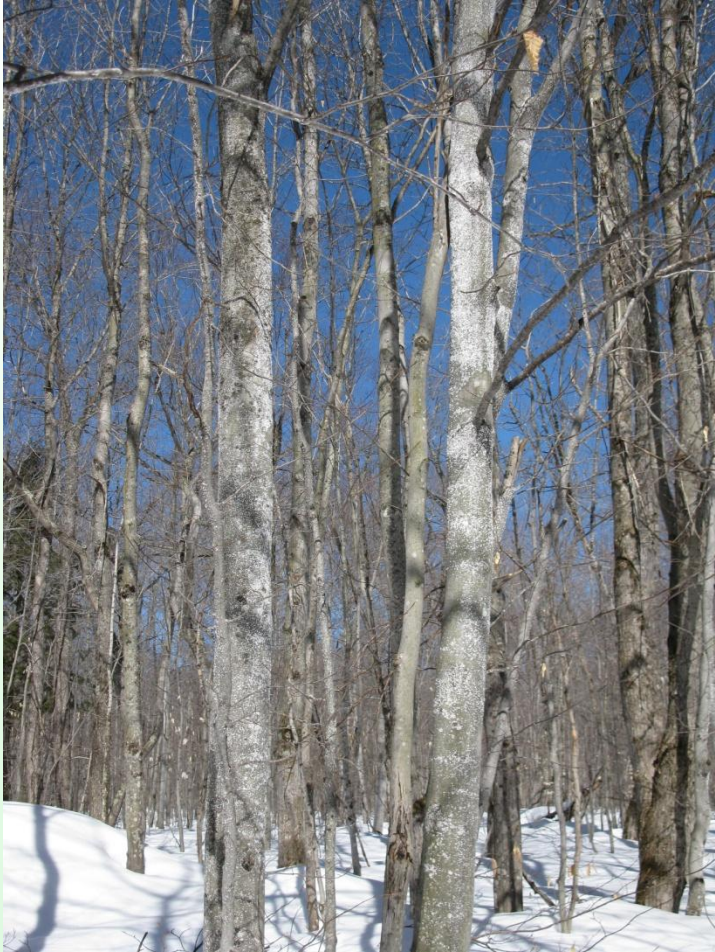
We are FSC - The TNC certified group (7 states)
now contains seven members and 268,699
acres.



Business Stability



Unforeseen things



Timber Products at Big Party



Contact: Nature Conservancy
906-225-0399



[http://www.nature.org/wherewework/northamerica/
states/michigan/](http://www.nature.org/wherewework/northamerica/states/michigan/)

<http://vimeo.com/15041649>