

BENEFITS OF PUBLIC FORESTS

14th Annual Sustainable Forestry Conference

Florence, WI

April 19, 2018

Doug Brown

County Forest & Public Lands Specialist

Division of Forestry

BENEFITS OF PUBLIC FORESTS

Timber Production

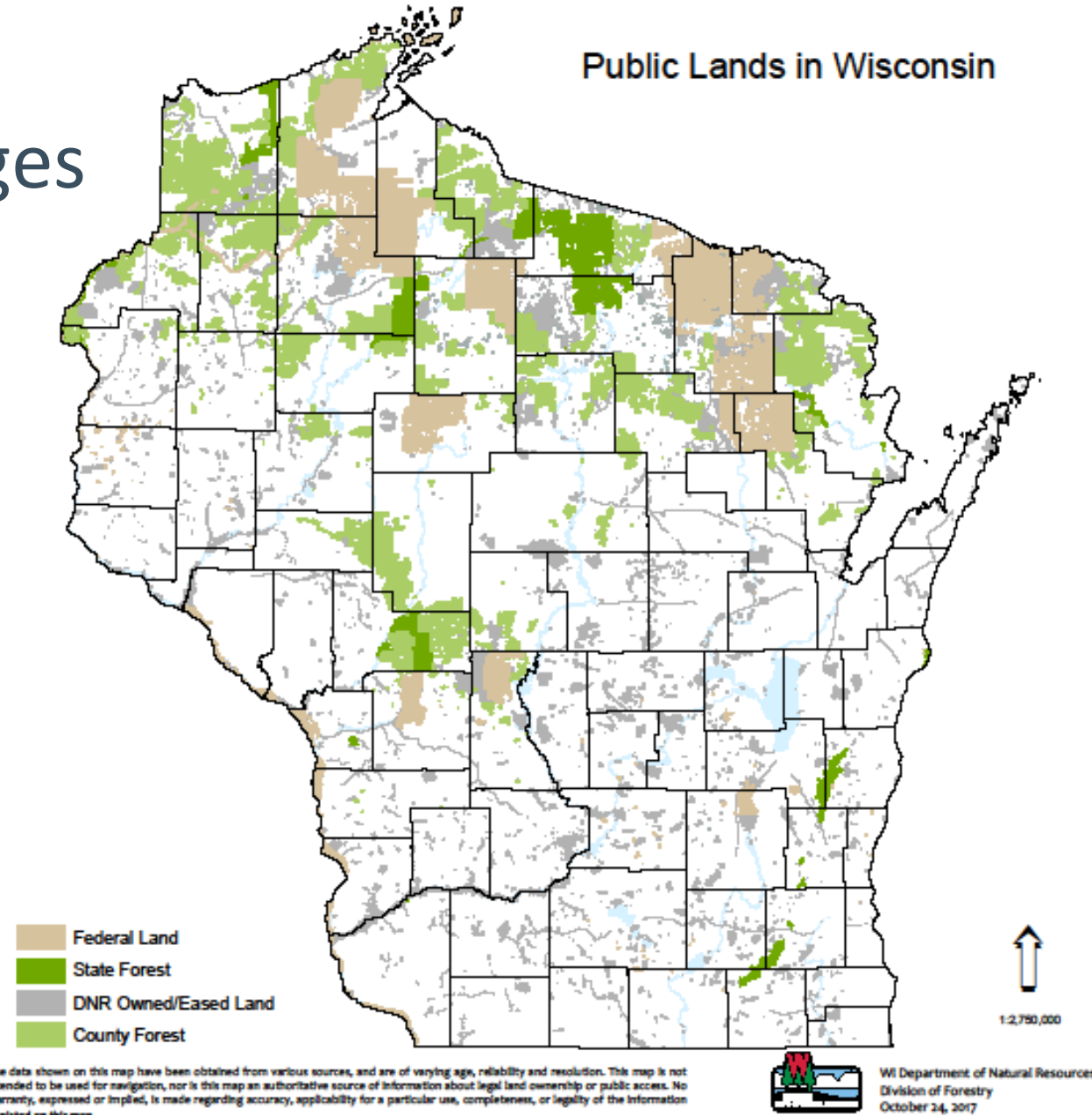


Recreation



Public Land Ownership-Acreages

- County Forest Program- 2.4 Million
- State Lands- 1.5 Million
- USFS- 1.5 Million
- BCPL- 77,000
- Timberlands Statewide- Nearly 1/3 is publicly owned



Economic Impact of Forestry

- WI Forest Industry sustains 60,000 full time jobs
- WI Forests supports a \$24 billion dollar forest industry in WI
- Generates county tax relief
- Invaluable to the tourism industry
 - Hayward, Minocqua, Ashland, Bayfield Peninsula, Eagle River, Lakewood-Townsend
 - What do they all have in common? Ample public land, significant water resources
- Provides nearly 5.5 million acres open to public recreation including hiking, skiing, hunting, trapping, bird watching, etc...



Timber Sale Program- State & County Forests

- Calendar Year 2017- Closed Timber Sales

	# Sales completed	# Acres harvested	Acres per sale	# MBF sold	# Cords sold	All products: # Cord Equiv	Stumpage value	Value per sale	Value per acre
State Forests	95	7,890	83.05	3,191	129,757	137,174	\$6,276,365	\$66,067	\$795
Department Lands	141	7,797	55.30	4,600	139,126	149,434	\$5,987,687	\$42,466	\$768
County Forests	585	41,003	70.09	18,332	675,960	716,560	\$38,227,565	\$65,346	\$932
Total	821	56,690	69.05	26,123	944,843	1,003,169	\$50,491,617	\$61,500	\$891

- County Forest Program – Financial Commitment to townships
 - **\$4.54 Million** (10% timber revenues and \$0.30/acre Acreage Share Payment)

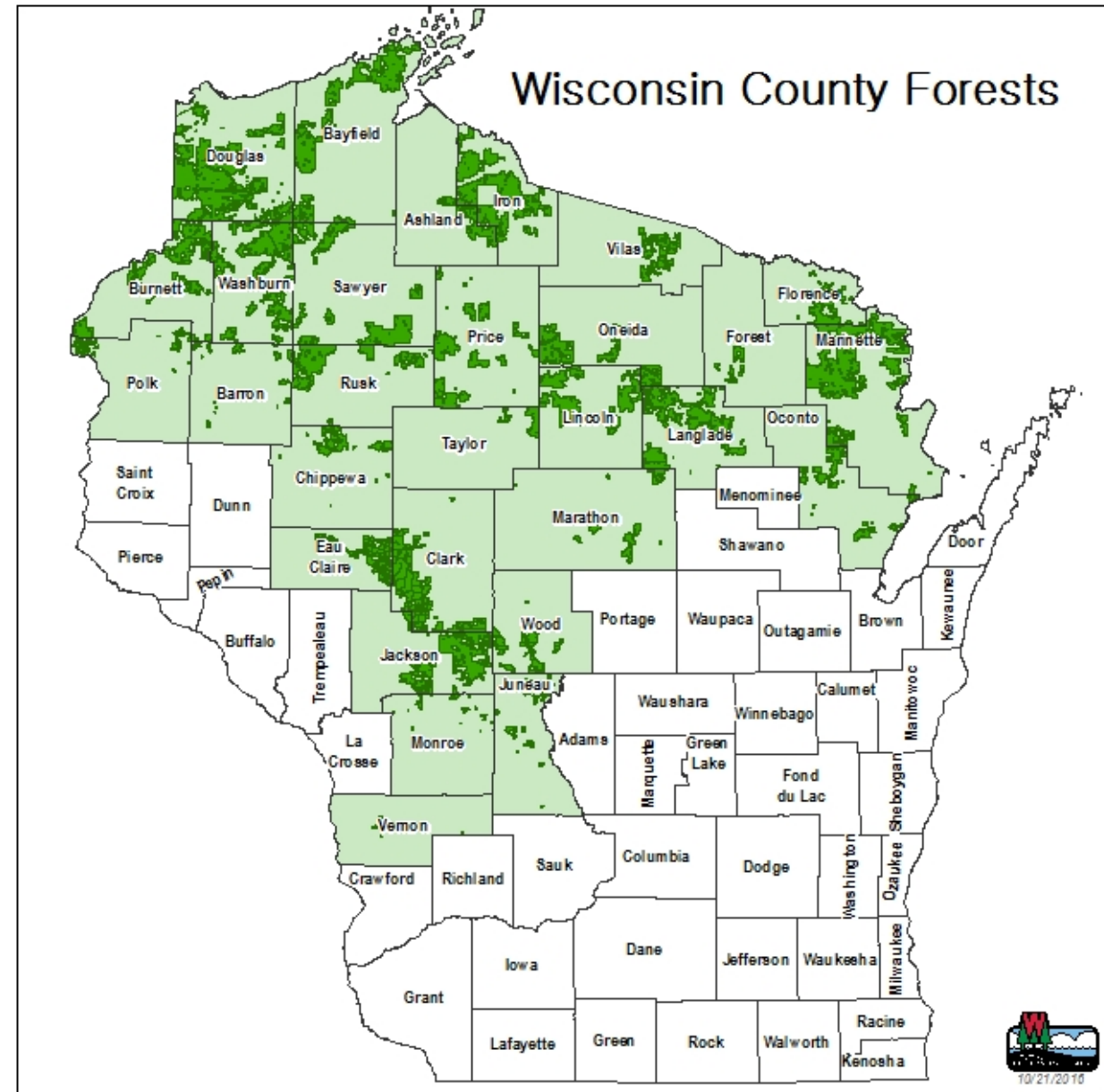
Some More Awesome Stats on Wood we put in Piles

- Last 10 Years on State/County Lands
- 639,000 acres harvested
- 11,135,000 cord equivalents on market
 - Continual Supply of wood to the markets
- \$445.6 Million in stumpage
 - \$757.5 Million impact



County Forest Overview

- 29 Counties
- Largest Public ownership
- Unique to the nation
- 1928- Langlade Co. 1st
- 1999- Vernon Co. Last to Join



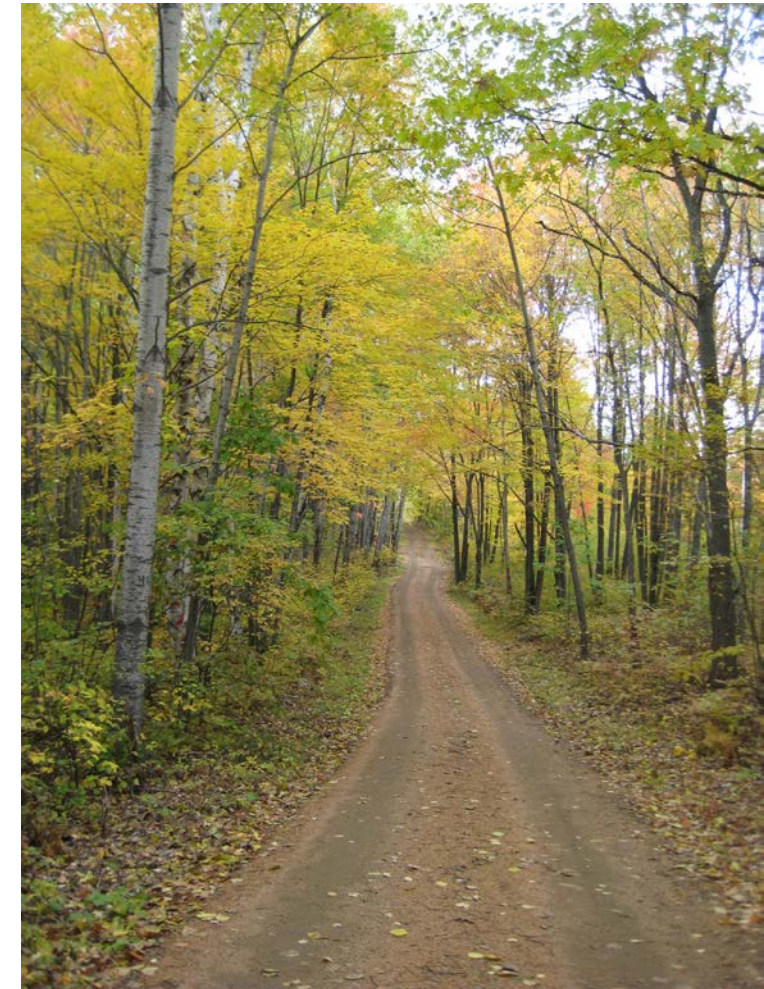
Wisconsin County Forest Acres

Ashland	40,305	Juneau	17,799	Taylor	17,688
Barron	16,265	Langlade	130,003	<u>Vernon</u>	<u>1,887</u>
Bayfield	171,933	Lincoln	100,843	Vilas	41,140
Burnett	111,100	Marathon	29,937	Washburn	149,986
Chippewa	34,623	Marinette	229,939	Wood	37,762
Clark	134,254	Monroe	7,281		
<u>Douglas</u>	<u>280,066</u>	Oconto	43,706		
Eau Claire	52,811	Oneida	82,279		
Florence	36,395	Polk	17,166		
Forest	14,096	Price	92,222		
Iron	174,801	Rusk	89,324		
Jackson	122,091	Sawyer	115,197		



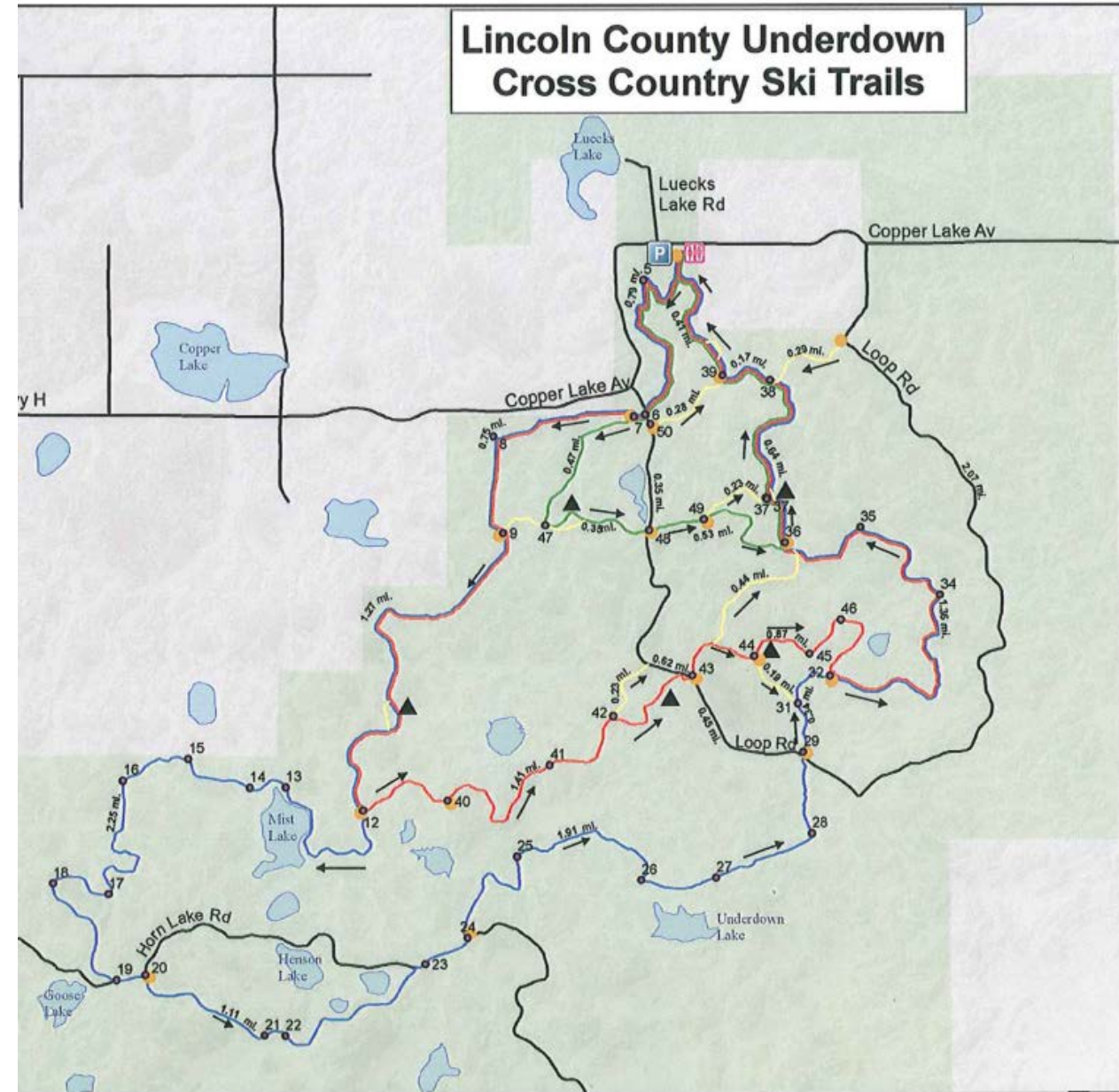
Recreation & Tourism on County Forests

- Over 9130 miles of managed snowmobile trails
- 1,730 miles of managed ATV trails
- 145 miles of motorcycle trails
- Over 460 miles of groomed Cross-Country Ski Trails
- Nearly 400 miles of horse trails
- Nearly 400 miles of bicycle trails
- Nearly **3,340 campsites** for public use
- 55 beaches with over 2 miles of frontage
- 280 designated boat landings
- Dogsled and snowshoe trails
- 500 plus miles of designated hiking trails
- Thousands of miles of forest roads across 2.4 million acres



Highlighted County Recreation Areas

- **Lincoln County**-Underdown -8260 Ac
- Snowmobile/Winter ATV Trails-10 miles
- Ice Age Trail-6 miles
- X-C Trails 20 miles
- Single Track Bike 30 miles
- Horse Trails 22 miles
- Snowshoe Trails 7.5 miles
- 3.7 miles of road routes open to summer ATV use
- Local Clubs hold multiple events
 - Equestrian- 7/year
 - Bike, Ice-Age, Snowshoe clubs



- [illegible]

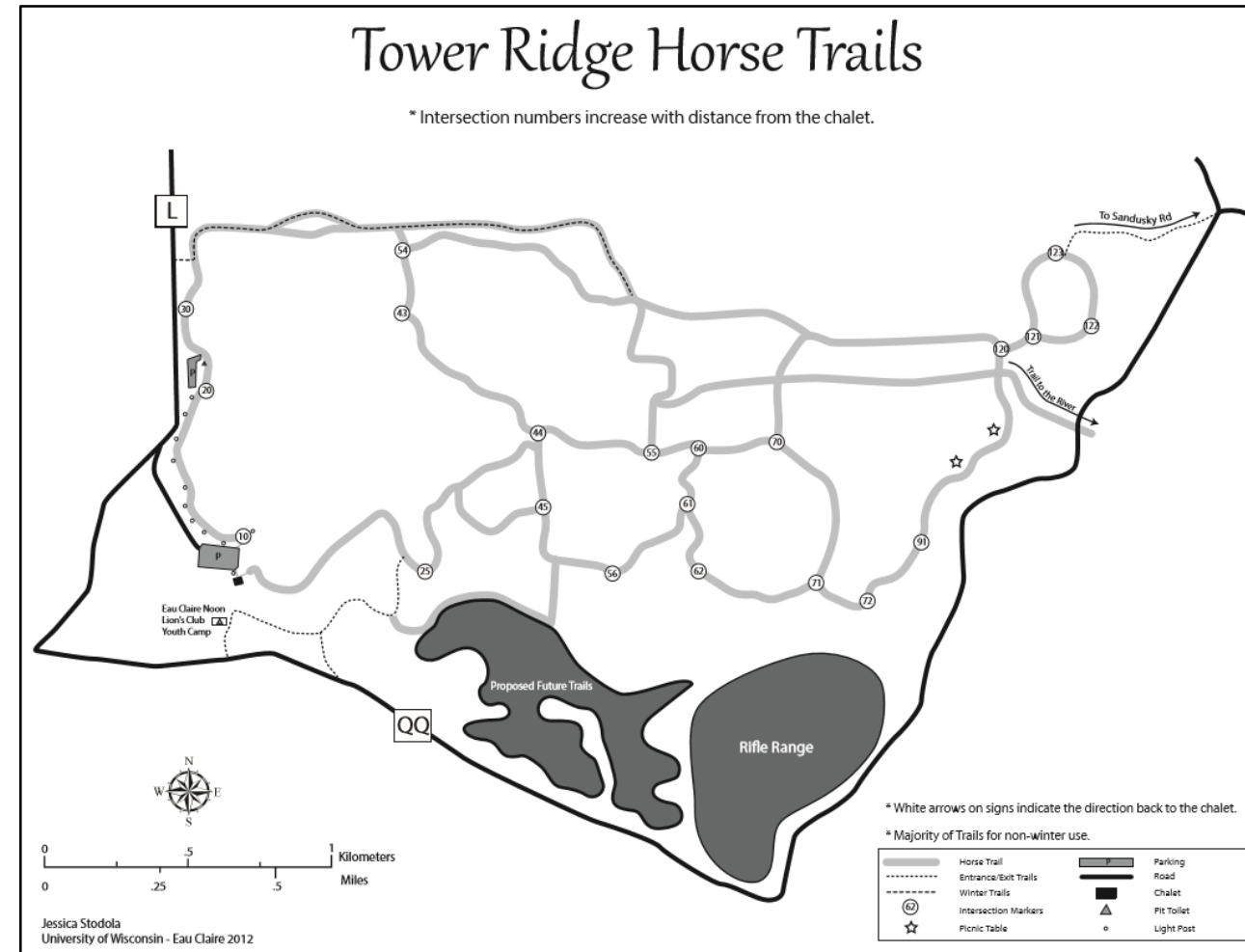
Highlighted County Recreation Areas Cont.

- **Bayfield County**-Cable Block-5600 Ac
- Broken into Non-Motorized and Motorized
- X-C Trails 23 miles
 - Some Trails-Dual with Snowshoe
- Developing Fat-Tire groomed trails
- Single Track Bike 23 miles
- ATV- 9 Miles
- Snowmobile- 4 miles
- 1 Yurt
- Birkebeiner- 20,000 participants
- Fat Tire Festival- 3,100 participants
- Trail systems connected to USFS and Sawyer Co Forest lands



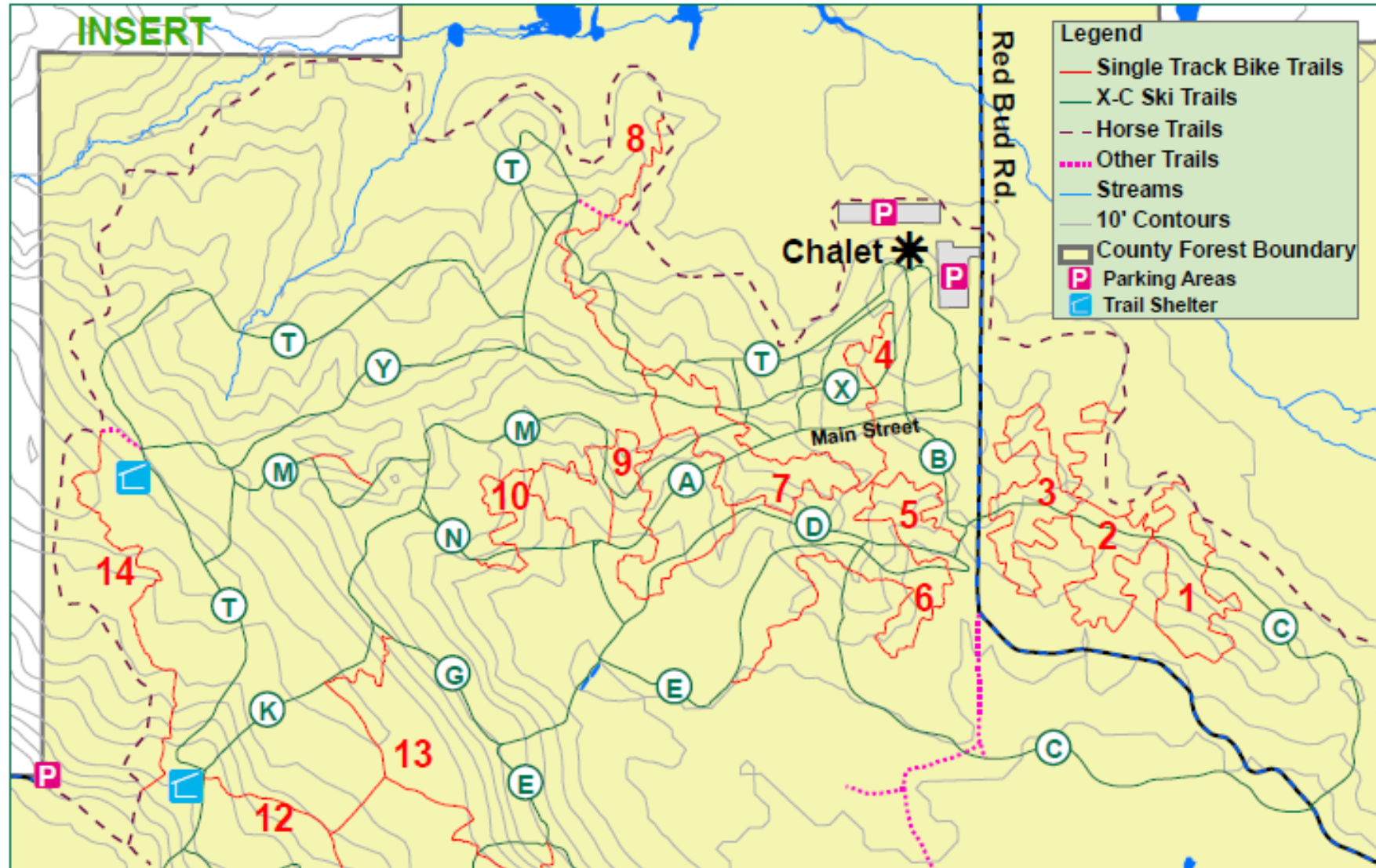
Highlighted County Recreation Areas Cont.

- **Eau Claire County-**
 - Tower Ridge Area – 675 Ac
- X-C Trails 12 miles
 - 1.9 miles lighted
- Snowshoe- 4 miles
- Equestrian – 7 miles
- Snowmobile runs through middle
- 36 Hole Disc Golf
- Shooting Range (up to 600 yards!)
- Youth camp, Group Camping area
- Canoe/Kayak Launch- Eau Claire River



Highlighted County Recreation Areas Cont.

Core Nine Mile Trail Area



- **Marathon County-**
Nine Mile Rec. Area
- 4900 Ac (1600 Ac Core)
- 20 Miles X-C (4 lighted)
- 13.5 Miles Mnt. Bike
- 10 Miles Snowmobile
- 6.7 Miles Snowshoe
- 100,000 visitors/year
- Ragnar Running Race
 - 2900 participants
- 3 Bike Races
 - 900-1000 participants
- Other ski, HS CC races
- Shooting Range

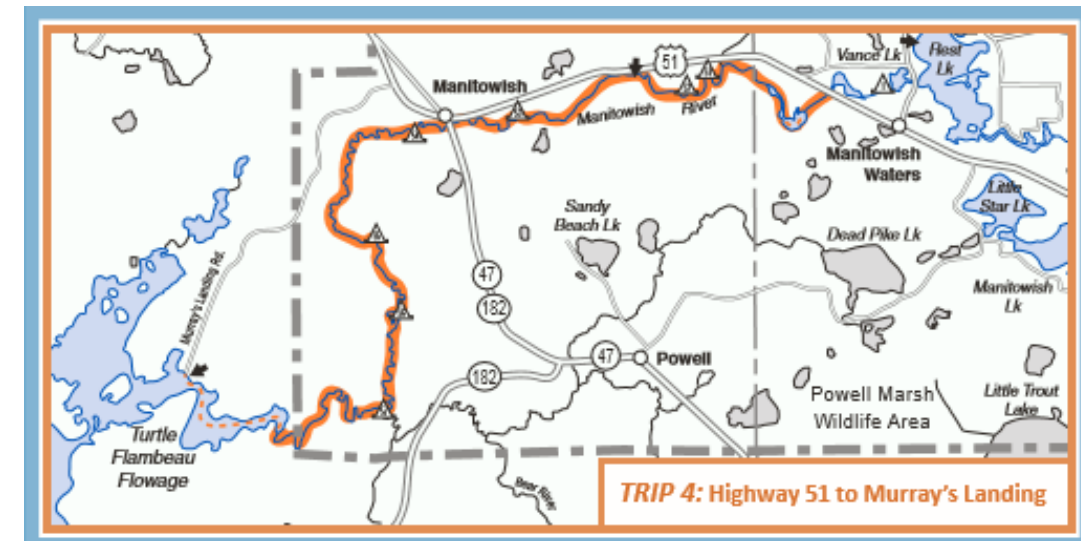
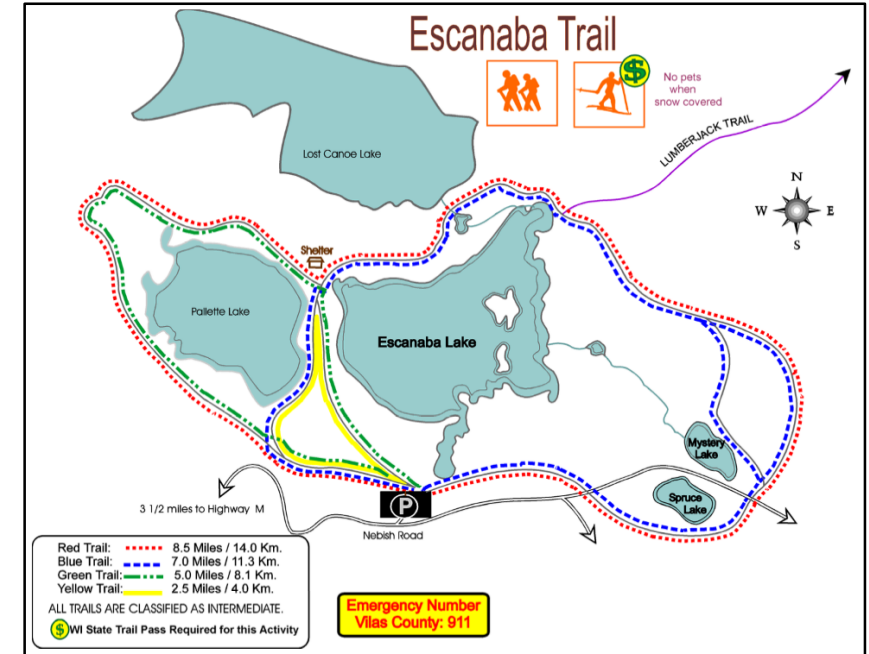
State Owned Lands

- State Forests
- 7 SF –Black River, Brule River, Flambeau River, Gov. Knowles, NHAL, Peshtigo & Coulee
 - 900,000 Acres
 - Coulee Experimental Forest in LaCrosse County- 2,800 acres
 - Northern Highland/American Legion- 236,000 acres
- 1300+ campsites
- 950+ miles of designated trails
- Department Lands- Fish, Wildlife & Parks
- 600,000 acres (range <10 acres - > 30,000 acres in size)
 - Fish Hatcheries – Fishing industry and recreational
 - Wildlife Areas - Manage specific game- Prairie Chicken
 - State Natural Areas- Unique areas or habitats
 - State Parks
 - Trail Corridors



Department Lands- State Forests

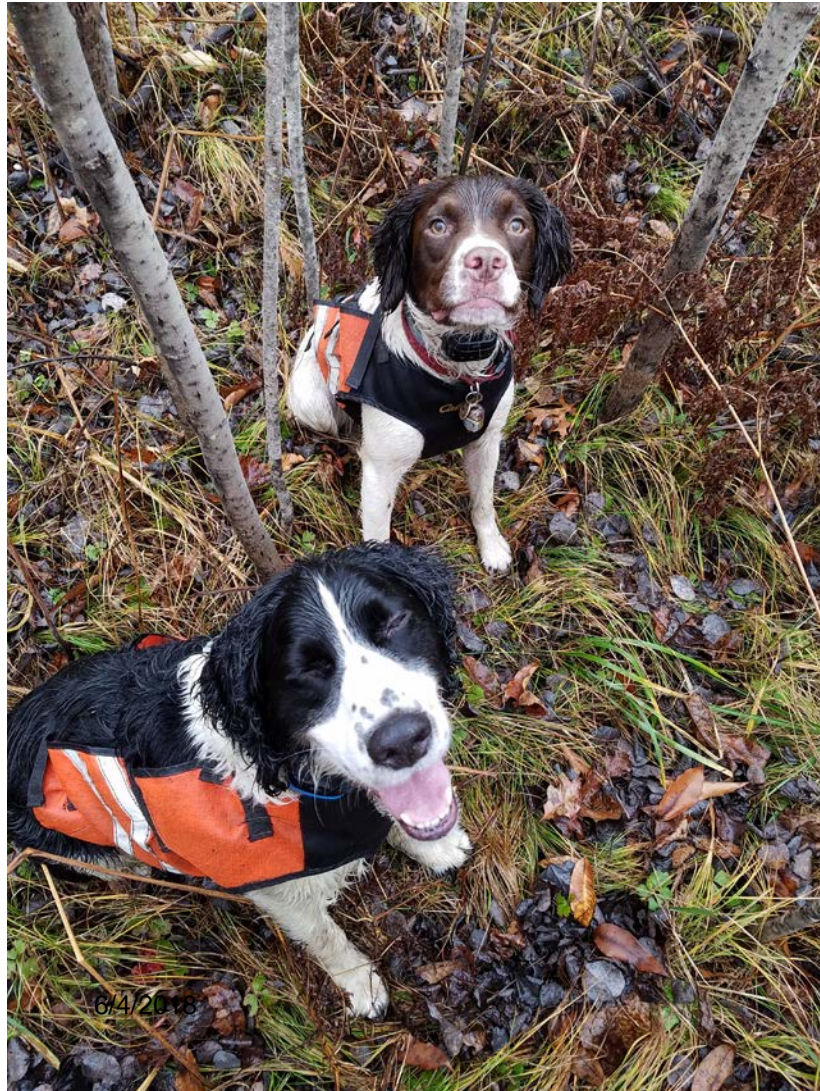
- **Northern Highland-American Legion SF**
- 236,000 Acres (4,000+ ac annual harvest goals)
- 18 Campgrounds and 2 Group Sites
- 1000+ campsites
 - 100 canoe/backcountry- water access campsites
- Sell over 110+ pulpwood cords for firewood
 - 19,000 bundles!
- 281 miles of skiing/biking trails
- 100+ boat landings
- Hire 40-50 LTE's (primarily for summer)
- Relationship with Minocqua/surrounding comm.



BENEFITS OF PUBLIC FORESTS SUMMARY

- 5.5 Million Acres of Public Land
- Continuous STABLE flow of wood on the market
- Sound Sustainable Forest Management- Conservation of water, soils, wildlife, endangered resources
- Providing a vast Forest Recreation component that is increasing
- Imperative to the Tourism industry

Thank you for your Time



QUESTIONS?

