



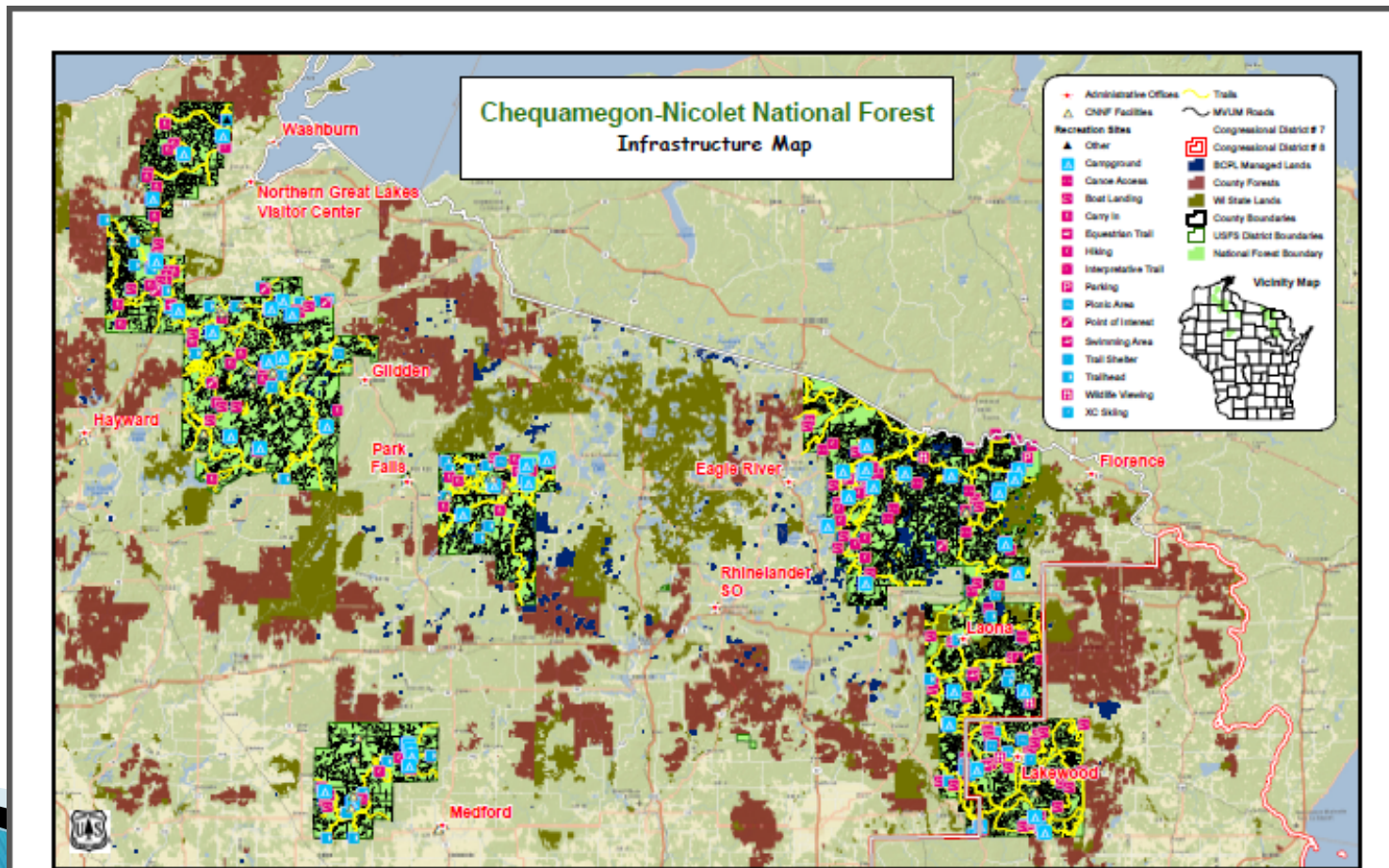
Status of Sustainable Forest Management on the Chequamegon–Nicolet NF



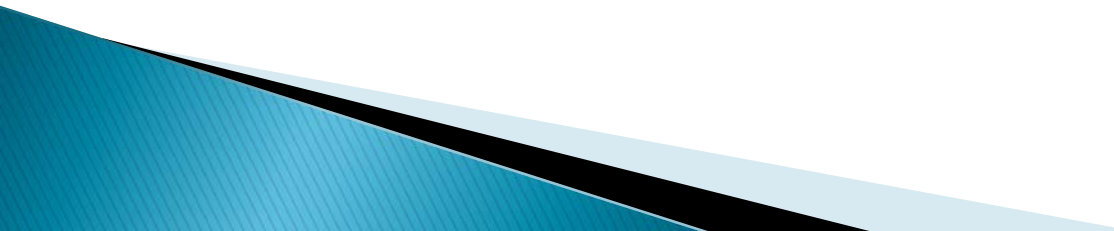
April 19, 2018
Florence Sustainable Forestry
Conference

Chequamegon–Nicolet National Forest

1.5+ million acres of national forest in 11 counties and 66 Towns embedded in matrix of County, State, Tribal, and private lands of NWI.



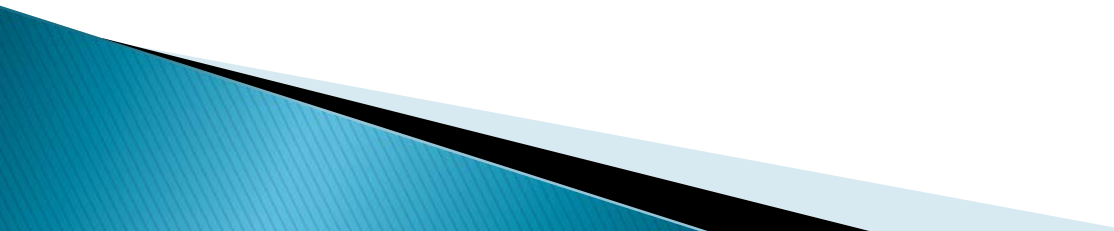
2018 – Perspective

- ▶ 85 years ago – national forests in Wisconsin
 - ▶ 20 years ago – official consolidation of Chequamegon and Nicolet National Forests
 - ▶ 14 years ago – revised CNNF Forest Plan
 - ▶ 4 years ago – 2014 Farm Bill with Good Neighbor Authority and permanent Stewardship Contracting authority
 - ▶ 3 years ago – first GNA agreement in country
 - ▶ 1 year ago – last year of CNNF unaffected by Emerald Ash Borer???
- 

Sustainable Forest Management Goals – 2004 Forest Plan

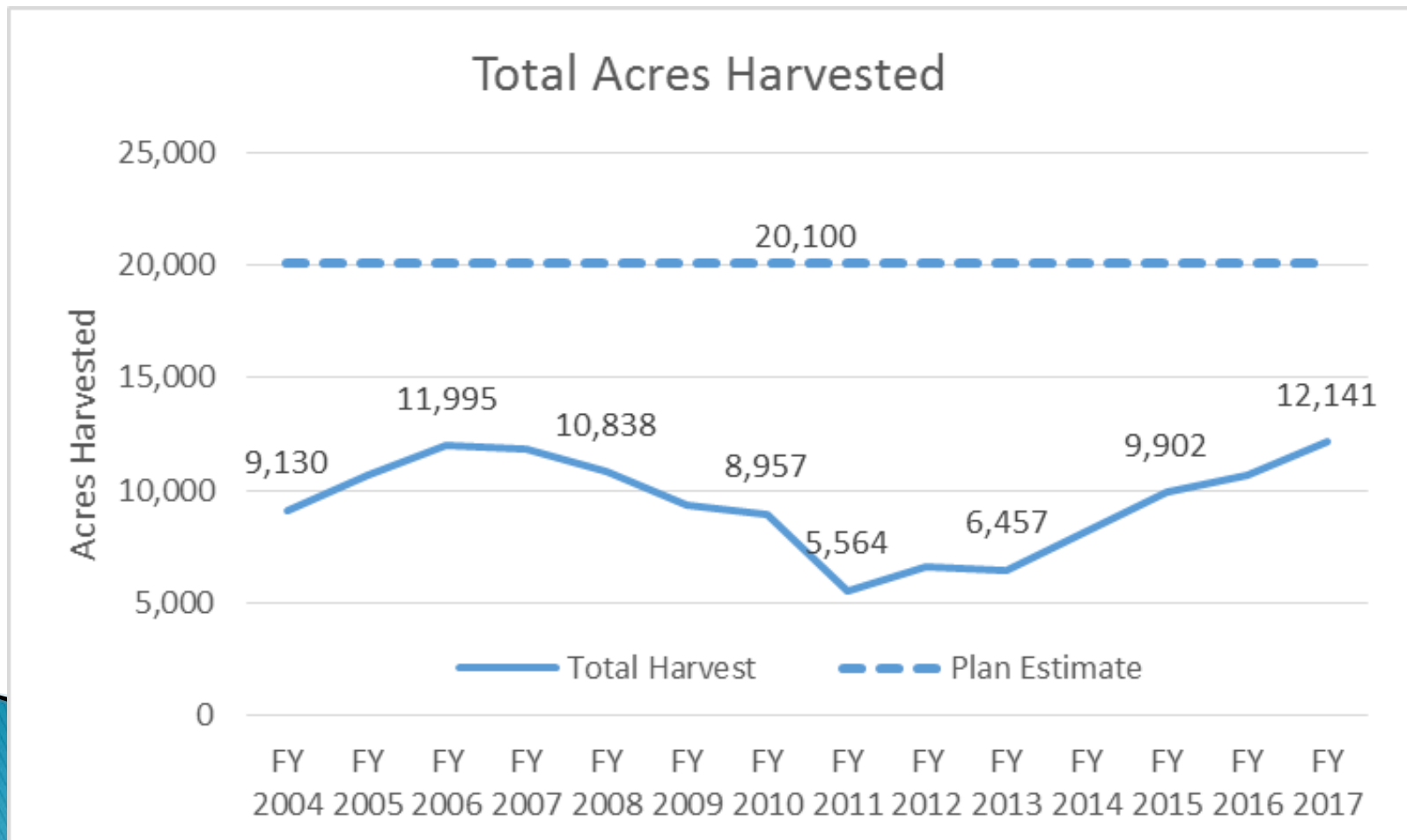
- ▶ Based around “desired future conditions”
 - Acres and locations of forest types
 - Stand conditions (BA, age class, etc.)
 - Use of commercial timber harvest as a tool to adjust stand conditions with steady flow of desirable forest products in acres deemed “suitable for timber production”
 - Keep out and/or react to invasive species
 - Maintain soil productivity
 - Help recover T&E species
 - Maintain viability of plants and animals

A Few Indicators of “How it is Going”

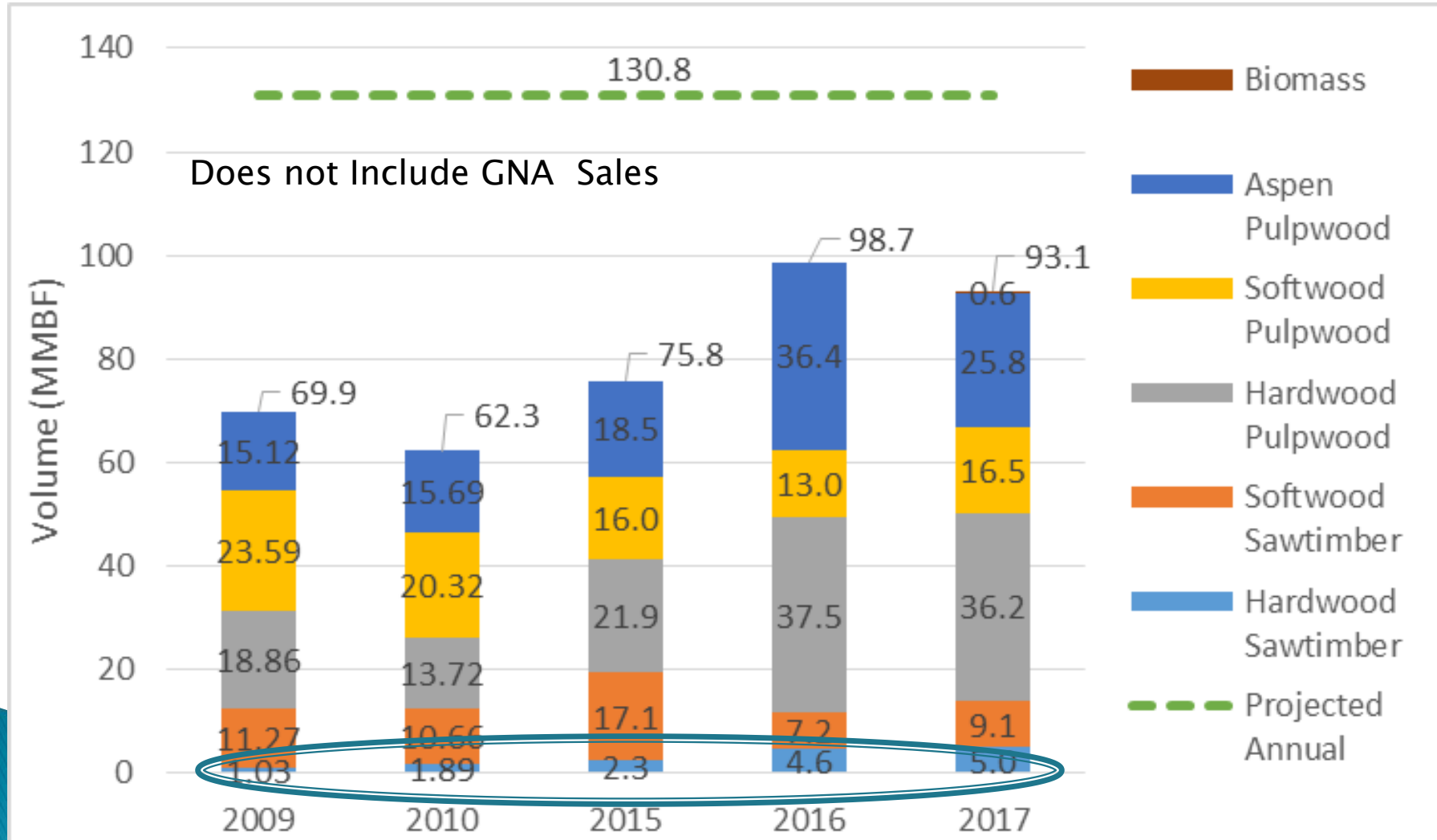
- ▶ Soon to be completed and released comprehensive monitoring and evaluation report on all aspects of national forest management based on indicators identified in Forest Plan.
 - ▶ Here are a few focused around forests and timber production.
- 

Forest Plan – Restoring and Sustaining Forest Types

Acres harvested as an indicator – progress still needed to meet desired future conditions of major forest types; expect to increase to 15,000 acres/year with GNA.

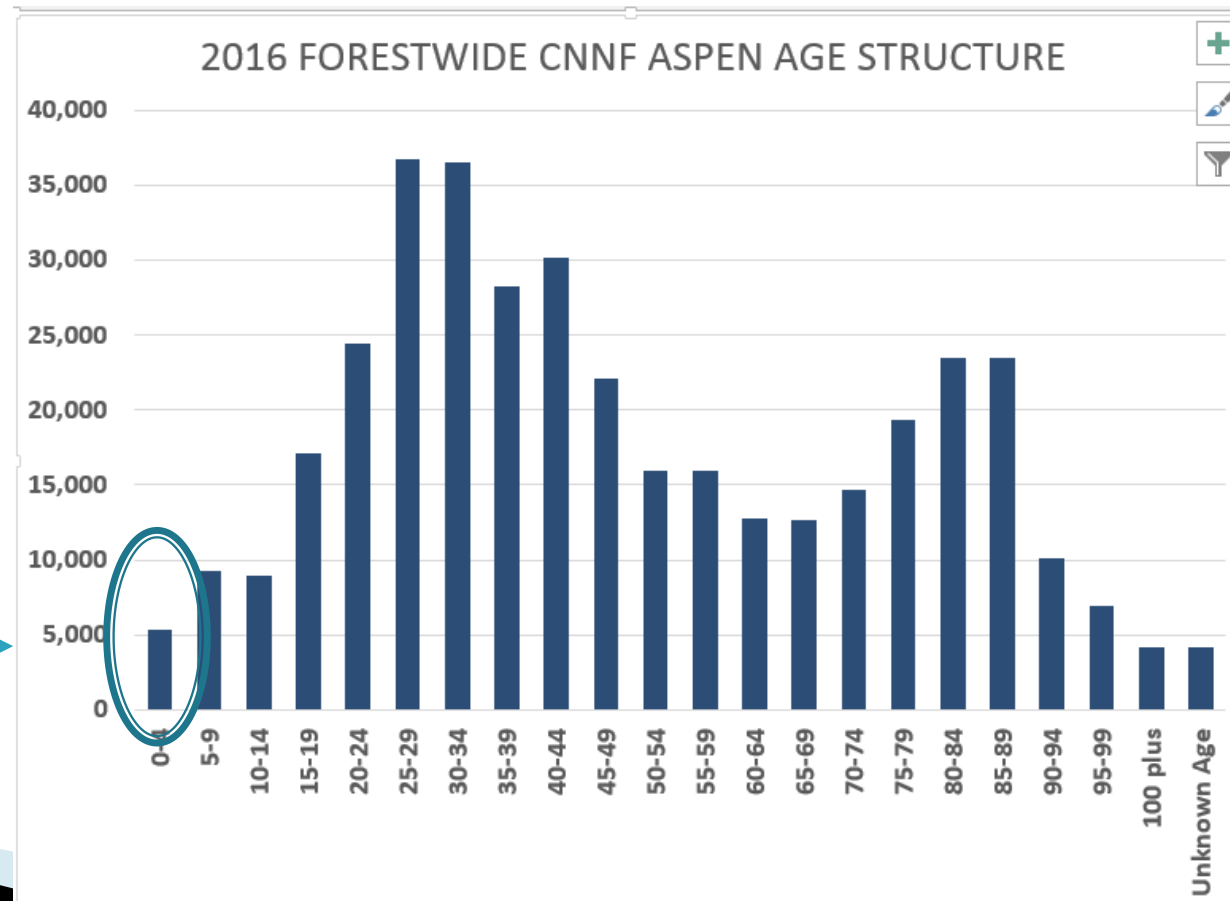


Sustaining Economies and Communities– Mix of Forest Products

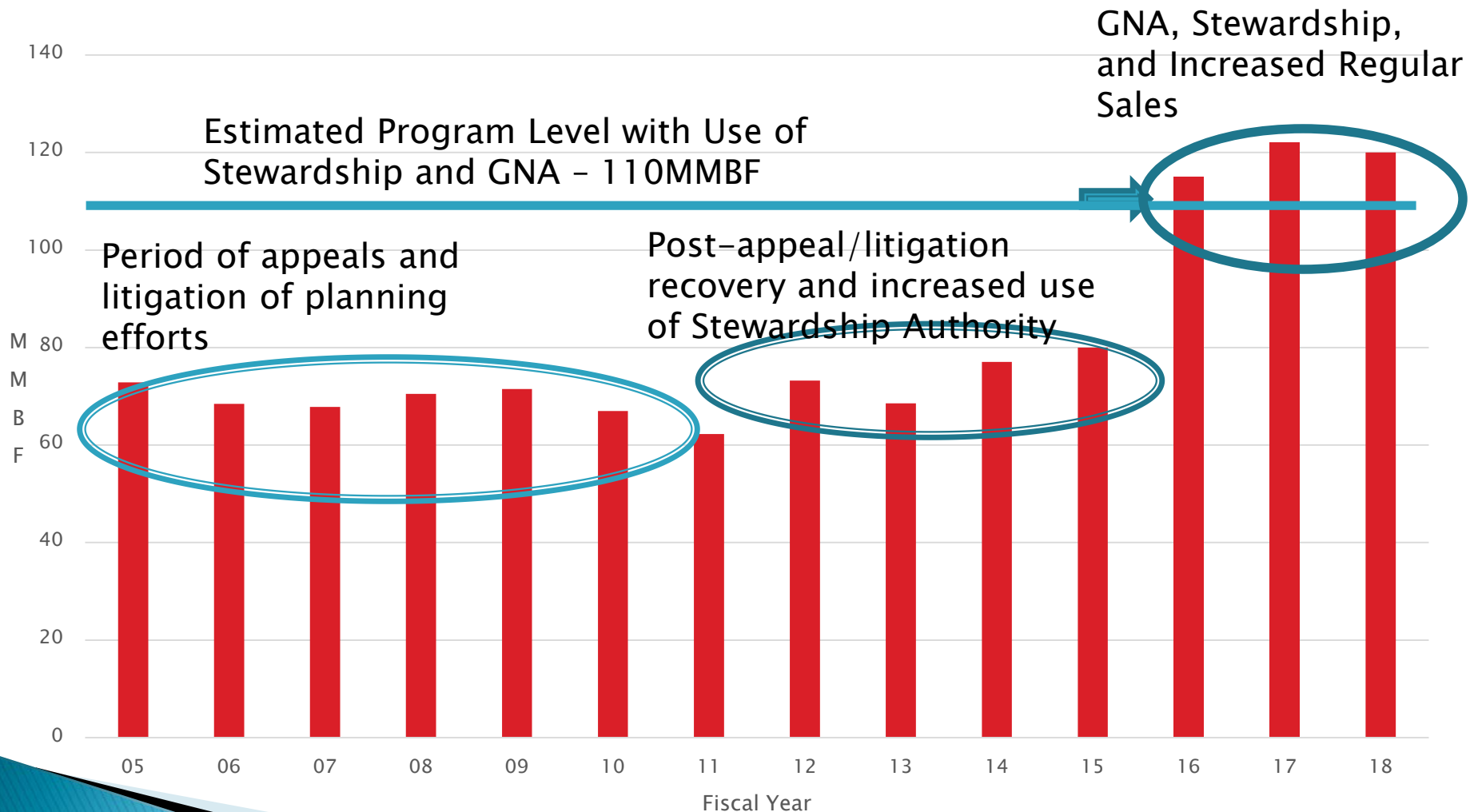


Sustaining Forest Types – Aspen Forests

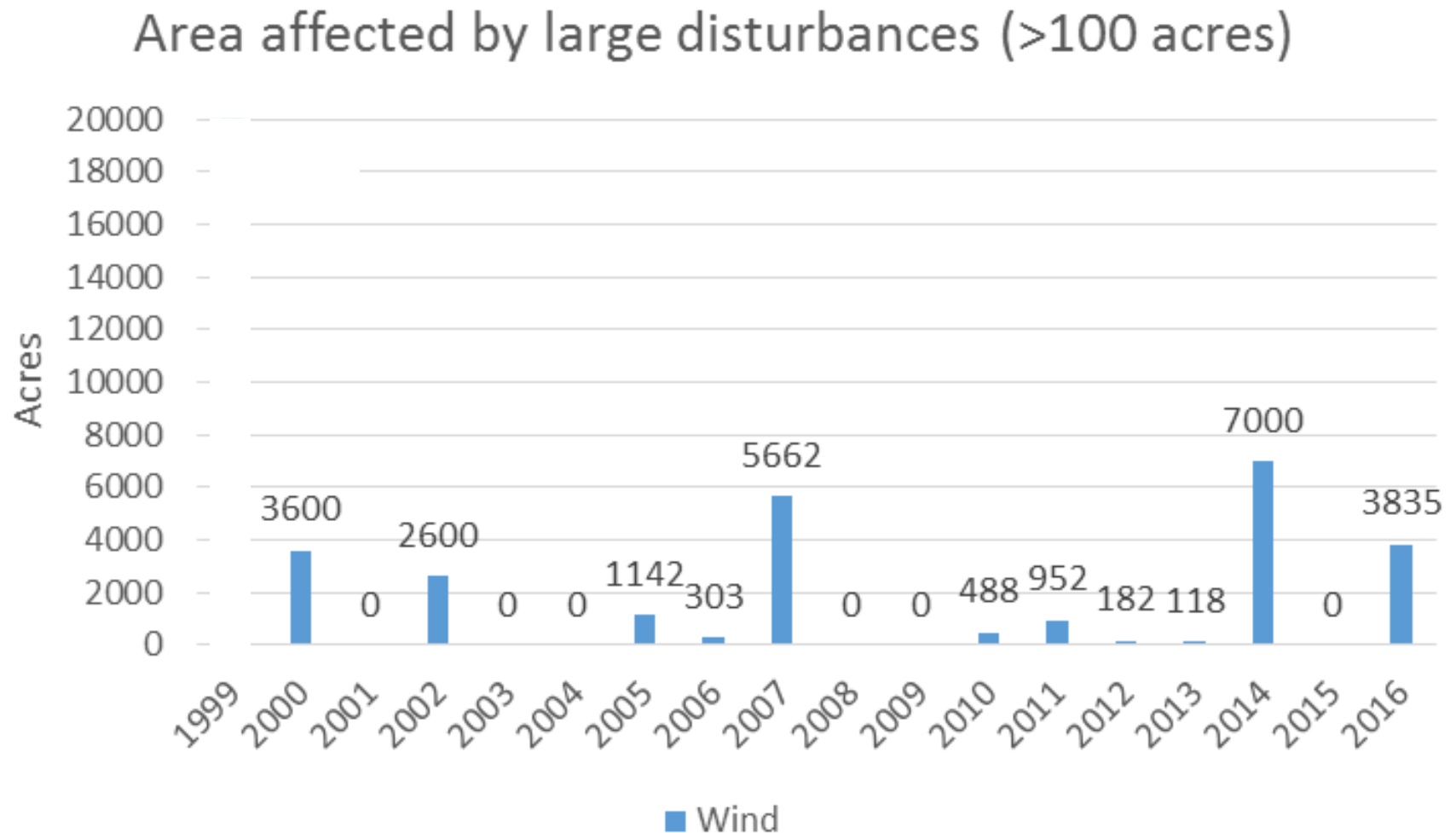
- ▶ Aspen Dominated Forest Types = Approximately 325,000 acres on CNNF Lands
- ▶ Age class distribution still an issue – decades of work to do
- ▶ GNA will result in more acres in youngest age class



CNNF Timber Volume Sold

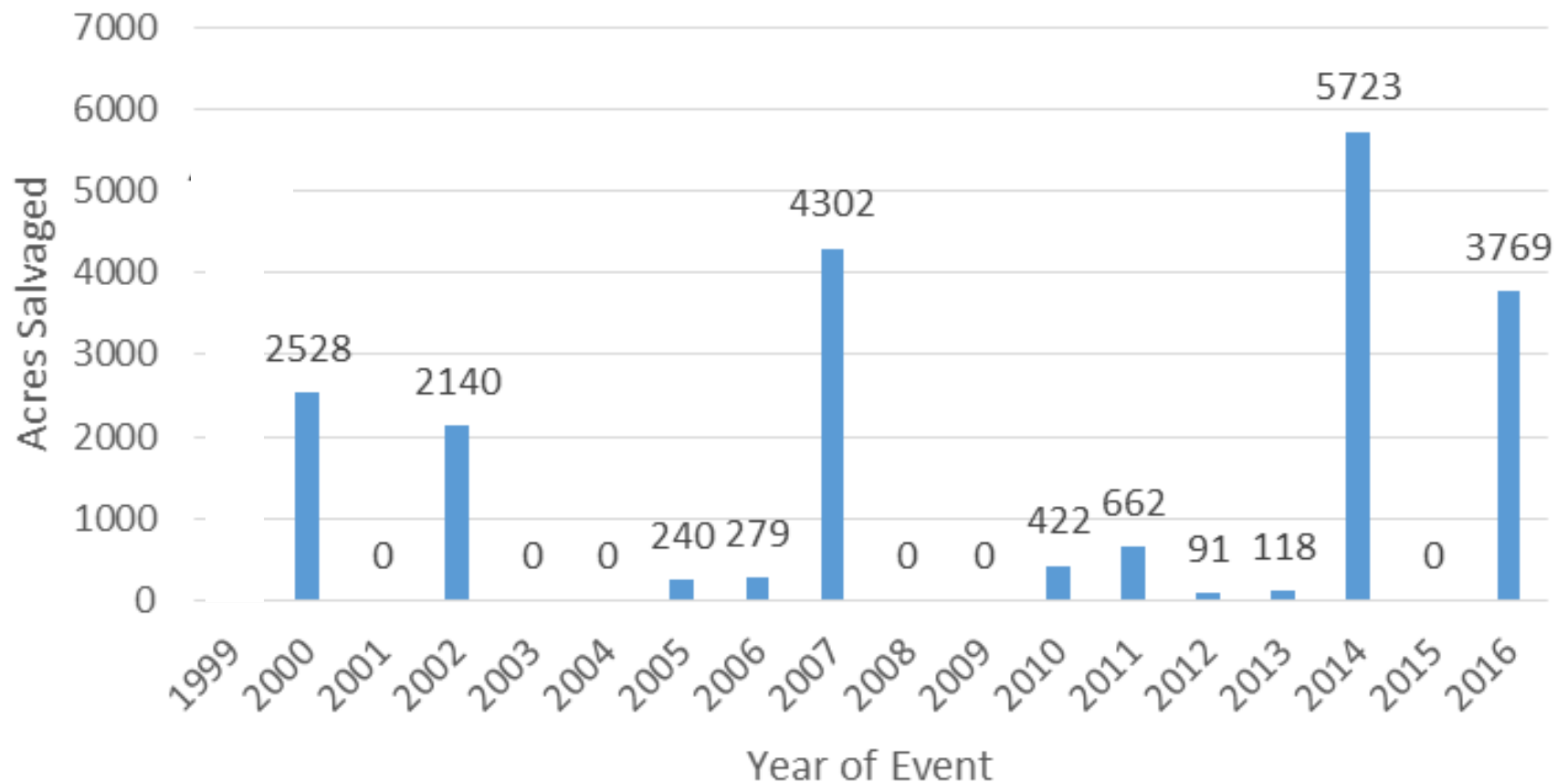


Sustaining Productivity – Addressing Blowdown – Capturing Value and Restoring Productivity



Addressing Blowdown – Capturing Value and Restoring Productivity

Salvage Following Large Disturbances



2014 Chequamegon Blowdown and Restoration

- ▶ September 2014; Severe Thunderstorms accompanied with high winds damage significant tracts of Forest Land in Sawyer and Price Counties –5,700 acres
- ▶ Approximately 45 Million board feet of timber recovered




2016 Chequamegon Flood and Windstorm and Restoration

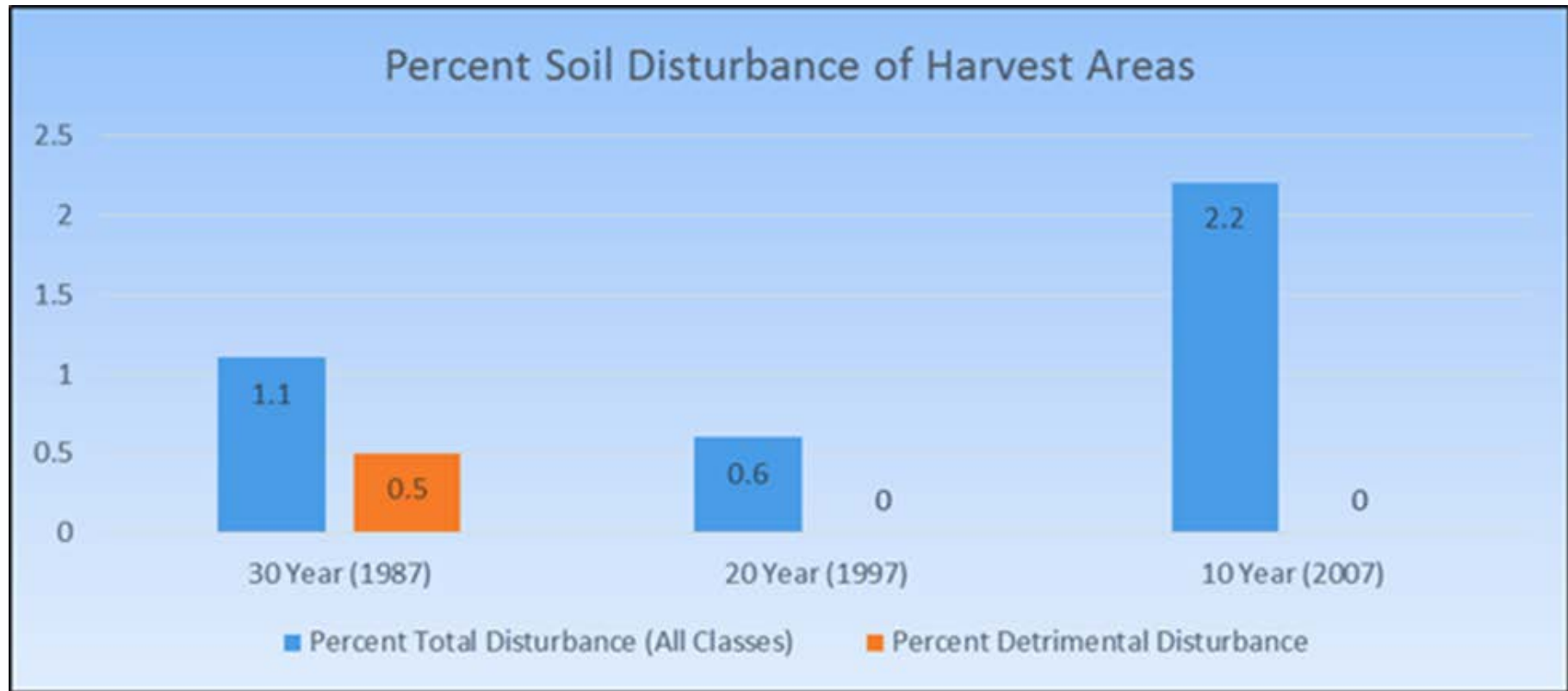
- ▶ July 11, 2016; Episodic Rain Event damaged roads and other infrastructure in Ashland, southern Bayfield, and Sawyer Counties.
- ▶ July 21, 2016; Straight Line Wind Event damaged forests in Bayfield County. 3,800 acres treated – 20 million board feet recovered.



Forest Management and Timber Sales – Bottom Lines

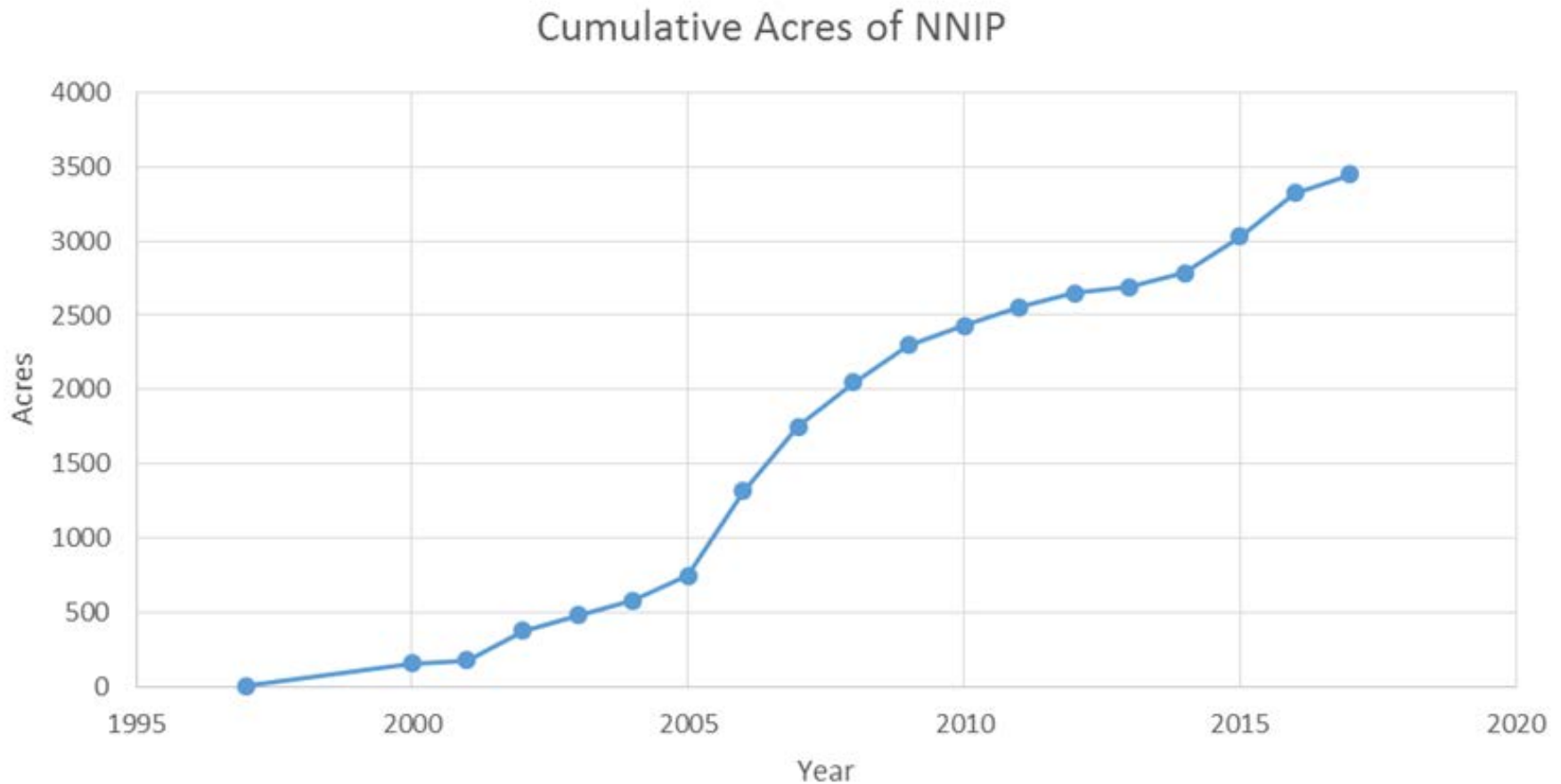
- ▶ All forest types continuing to need additional attention.
 - ▶ Young and old Aspen forests remain an issue, but progress on horizon.
 - ▶ Making progress in Northern Hardwood forests, but long way to go.
 - ▶ Pine forests closer to DFC's, but a small backlog and continued attention needed.
 - ▶ Blowdown salvage is occurring.
- 

Sustaining the Source of All Productivity – Soil Quality



Soil quality is maintained in timber harvest areas – soils recover over time with current BMP's.

Sustaining Integrity – Holding Back Alien Invaders



Minimal acres but growing...

Sustaining Integrity – Alien Invaders – Emerald Ash Borer

- ▶ Not yet detected on CNNF lands, but close.
- ▶ Most ash in low productivity black ash swamps.
- ▶ No good strategy (yet)

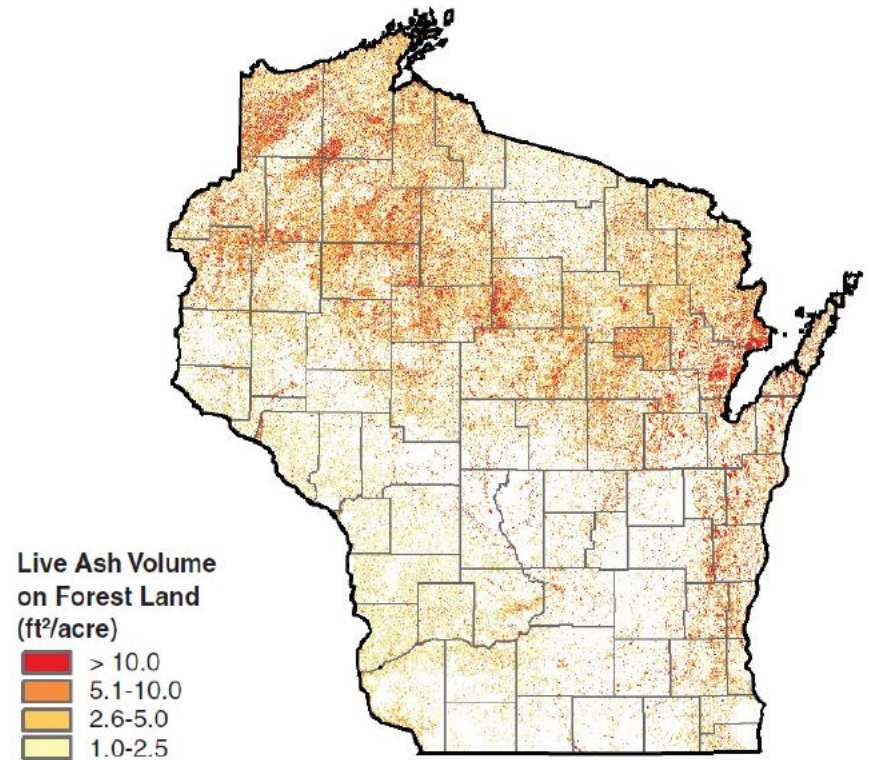
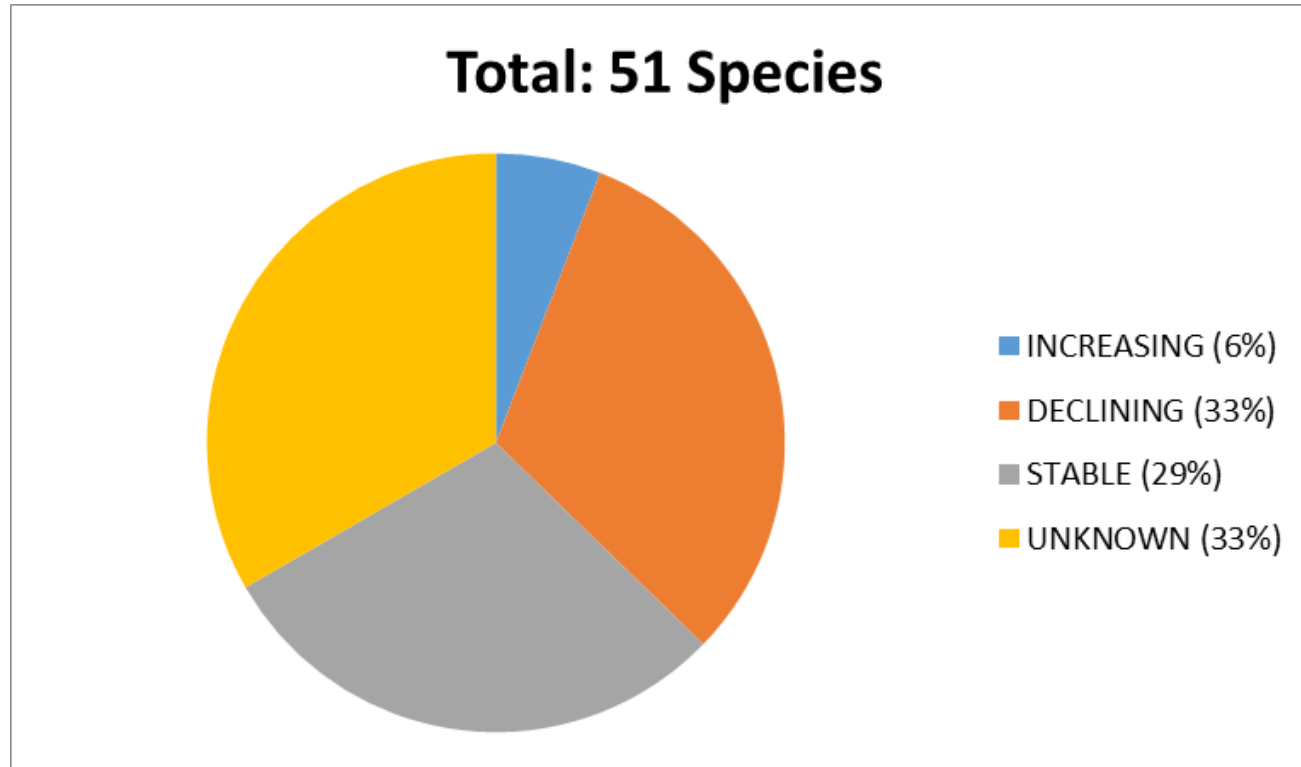


Figure 67.— Ash density on forest land, Wisconsin, 2009.

Sustaining All Species – Keeping all the “Cogs and Wheels”

Trends in Sensitive Species



Trends and effects of earthworms, weather patterns, deer browse and more?

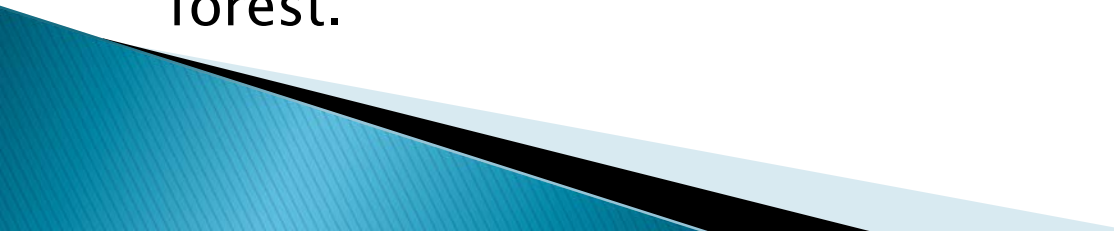
New Tools With High Potential to Help Address Sustainability Issues

– Good Neighbor Authority

Provides Additional Capacity When State Willing to Work on National Forest through an “Agreement” mechanism




Good Neighbor Authority

- ▶ A partnership – has to work for both partners – how much, where, when, etc.
 - ▶ **Forest Service “contribution”** – shelf ready timber projects for State to prepare, bid, award, and administer.
 - ▶ **State “contribution”** – organize and implement business model to accomplish award of timber sales in year projects are provided.
 - ▶ State is reimbursed for 100% of their investments from value of timber sold, but still a cost to bear.
 - ▶ Remaining funds from value of timber (aka “program income” can be reinvested in restoration work on national forest.
- 

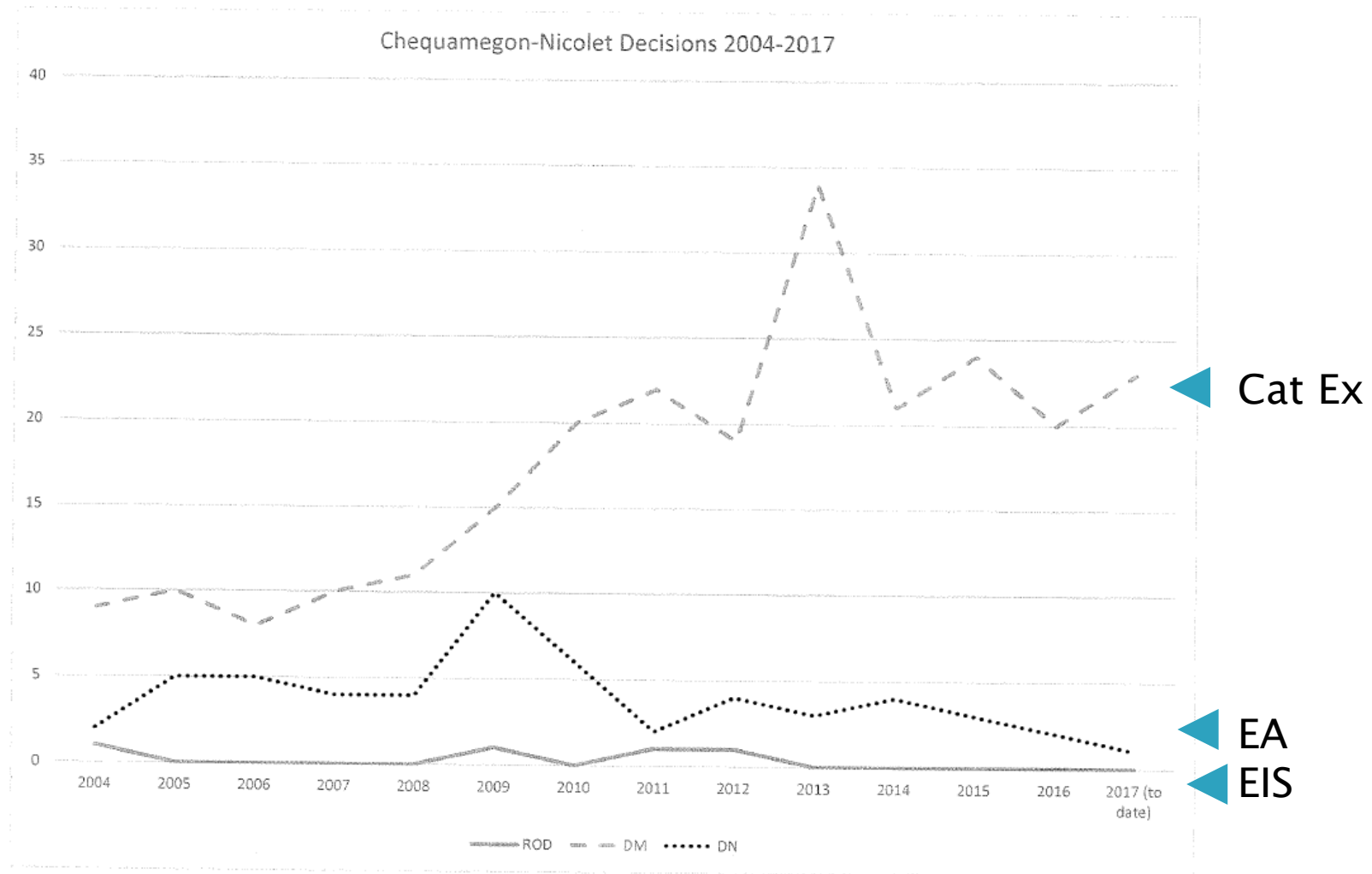
Good Neighbor Authority

- ▶ Chequamegon–Nicolet NF and State of Wisconsin developed **first and largest** GNA agreement in the country!!
 - ▶ **Provided additional 75MMBF** of national timber sales in first three years.
25MMBF provided in 2018.
 - ▶ Expect **\$1,000,000 annually** for national forest **restoration projects**.
- 

Stewardship Contracting Authority

- ▶ Full and permanent authority in 2014 Farm Bill
 - ▶ Testing Benefits of “Agreement” side of authority – **Renewable Resource Solutions, Florence County Parks and Forestry, The Nature Conservancy**. Looking for “optimal approach.”
 - ▶ Has added capacity of approximately 10MMBF annually.
- 

Sustaining Progress – Keeping the Pantry Shelves Stocked – Future Timber Sale Projects



Sustaining Progress – Future “Inventory” Projection

Continuing investments in project planning (NEPA) on all five Ranger Districts to ensure future opportunities for:

- GNA sales
- Stewardship Contracting
- FS sales
- Product mix
- Seasonality mix
- Geographic availability to local loggers and mills
- Potentially increased overall sale level

After current round of project planning work completed, will re-assess where we need to make next project planning investments.



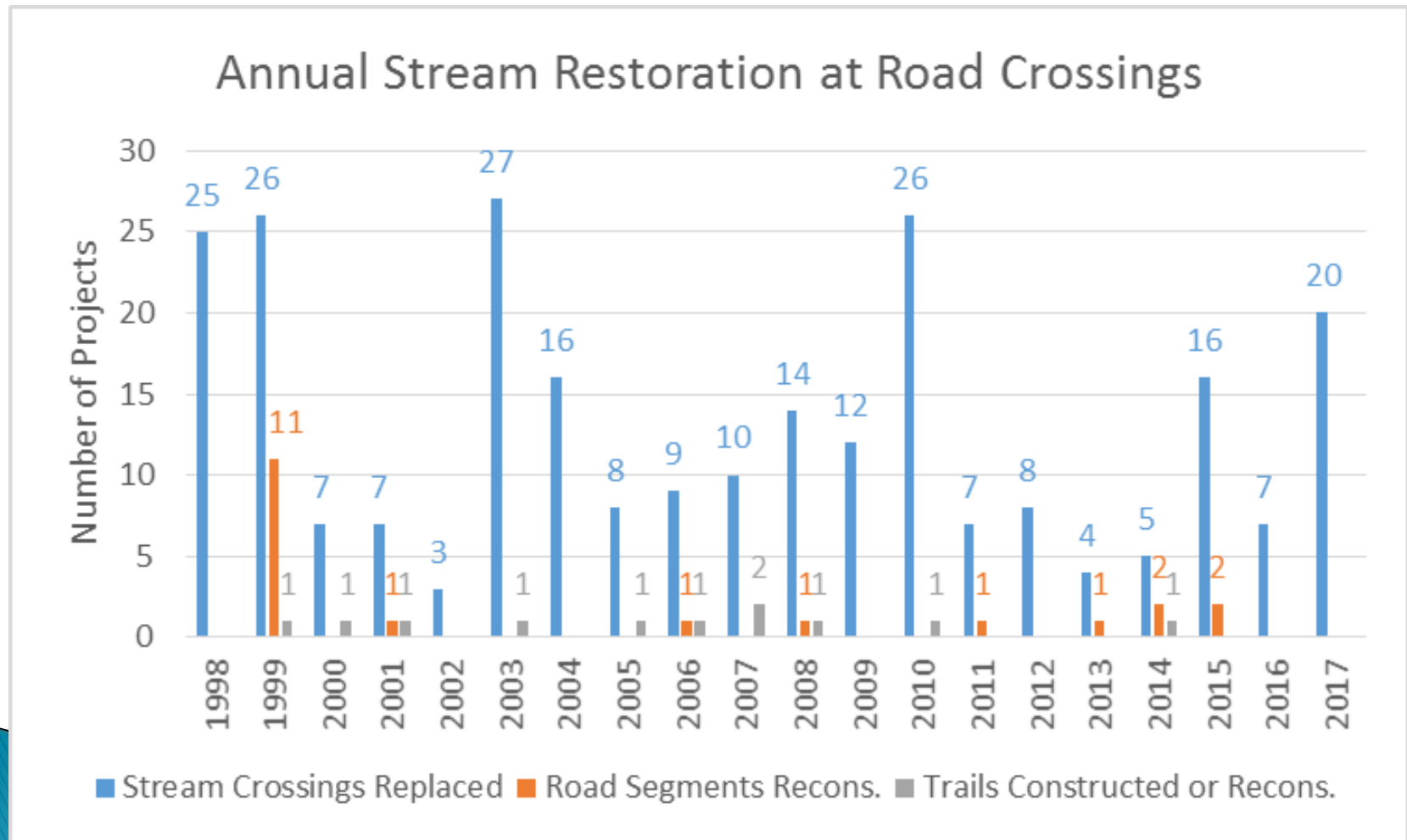
Ensuring a Sustainable Future – Maintaining Key Infrastructure

- ▶ Roads and Culverts and Bridges

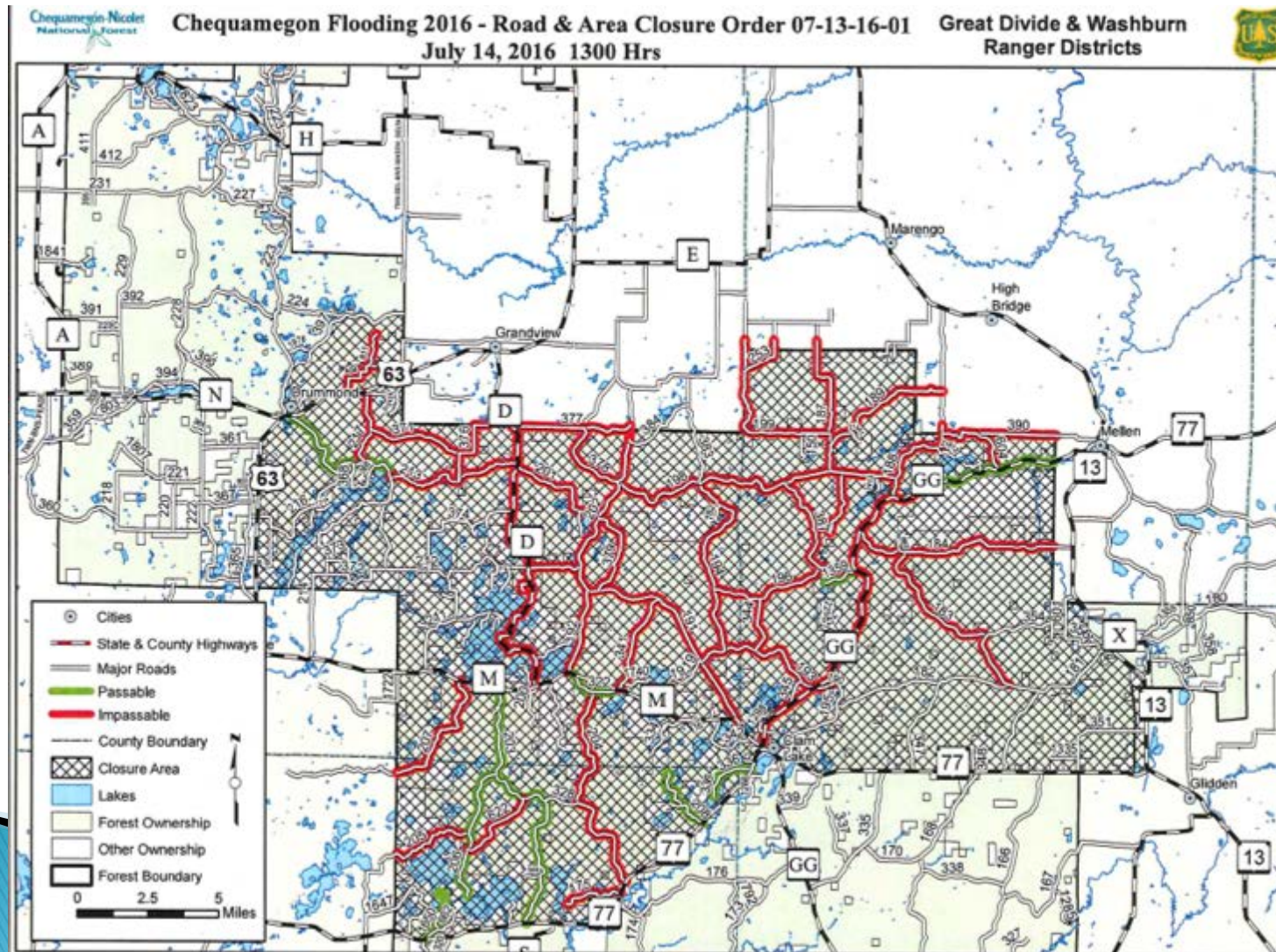


Ensuring a Sustainable Future – Maintaining Key Infrastructure

► Roads and Culverts



Ensuring a Sustainable Future – Maintaining Key Infrastructure



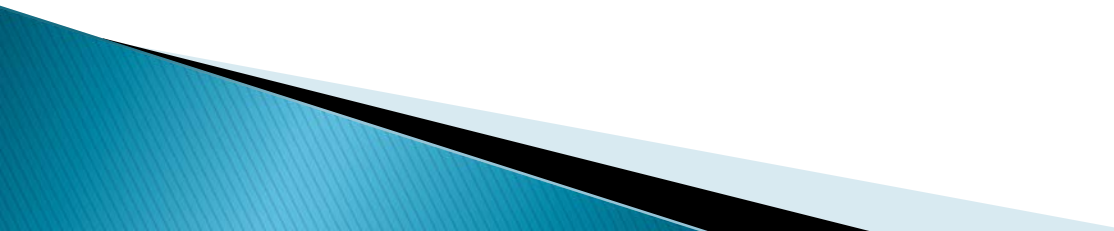
Coming Attractions for Improving Sustainability

Forest Products Modernization

- ▶ National effort to “re-engineer” forest products delivery system while capturing “low-hanging fruit” changes.
 - Designation by prescription
 - Weight-scaling
 - More to come

Coming Attractions

EADM – Environmental Analysis and Decision Making

- ▶ National effort to improve efficiencies and outcomes in implementing National Environmental Policy Act (NEPA).
 - Administrative Efficiencies
 - New categories for Categorical Exclusions (simplest form of NEPA)
 - Federal Register Notice identifying agency effort to make changes to approach to NEPA (non-specific)
 - More to Come
- 

Credits

- ▶ Hard working and dedicated CNNF Employees
 - ▶ Committed partners and their employees and volunteers
 - Wisconsin DNR
 - County Forests
 - TNC
 - RRS
 - GLTPA
 - FSFC
 - ▶ Congress
- 