



JOHN DEERE

Welcome

TimberMatic Maps & TimberManager Fundamentals

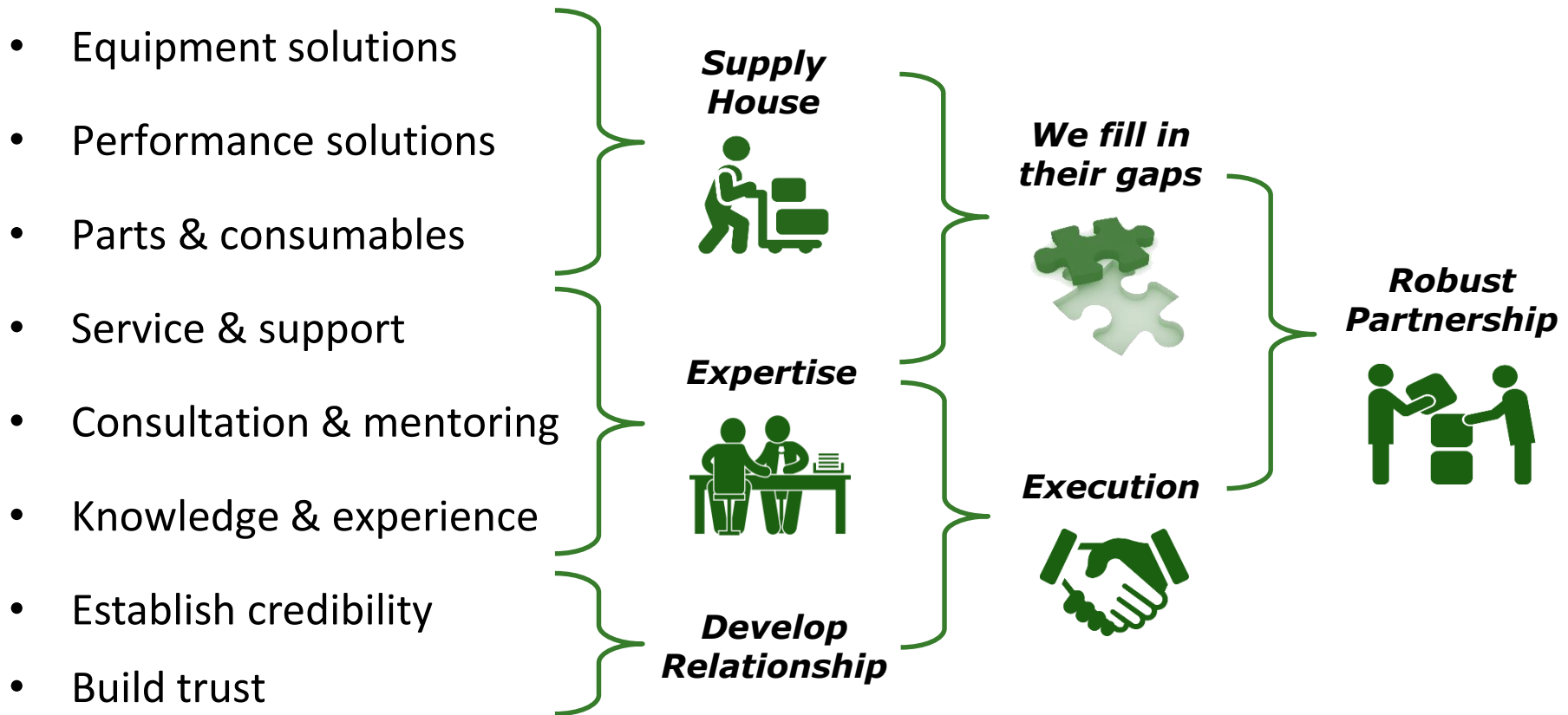
Carl Lockhart - Forestry Sales Consultant

Ontonagon, MI

What do we do at John Deere Forestry?

We manufacture and sell forestry equipment right?

Wrong... we deliver business solutions for the forestry entrepreneur



JOHN DEERE

Innovative Solutions

John Deere Forestry Solutions



Equipment



ForestSight



Partnership



JDLink™
TELEMATICS



MACHINE HEALTH
PROGNOSTICS



REMOTE DIAGNOSTICS
AND PROGRAMMING



SIMULATORS
AND TRAINING



TIMBERMATIC™



TIMBERMATIC™
MAPS



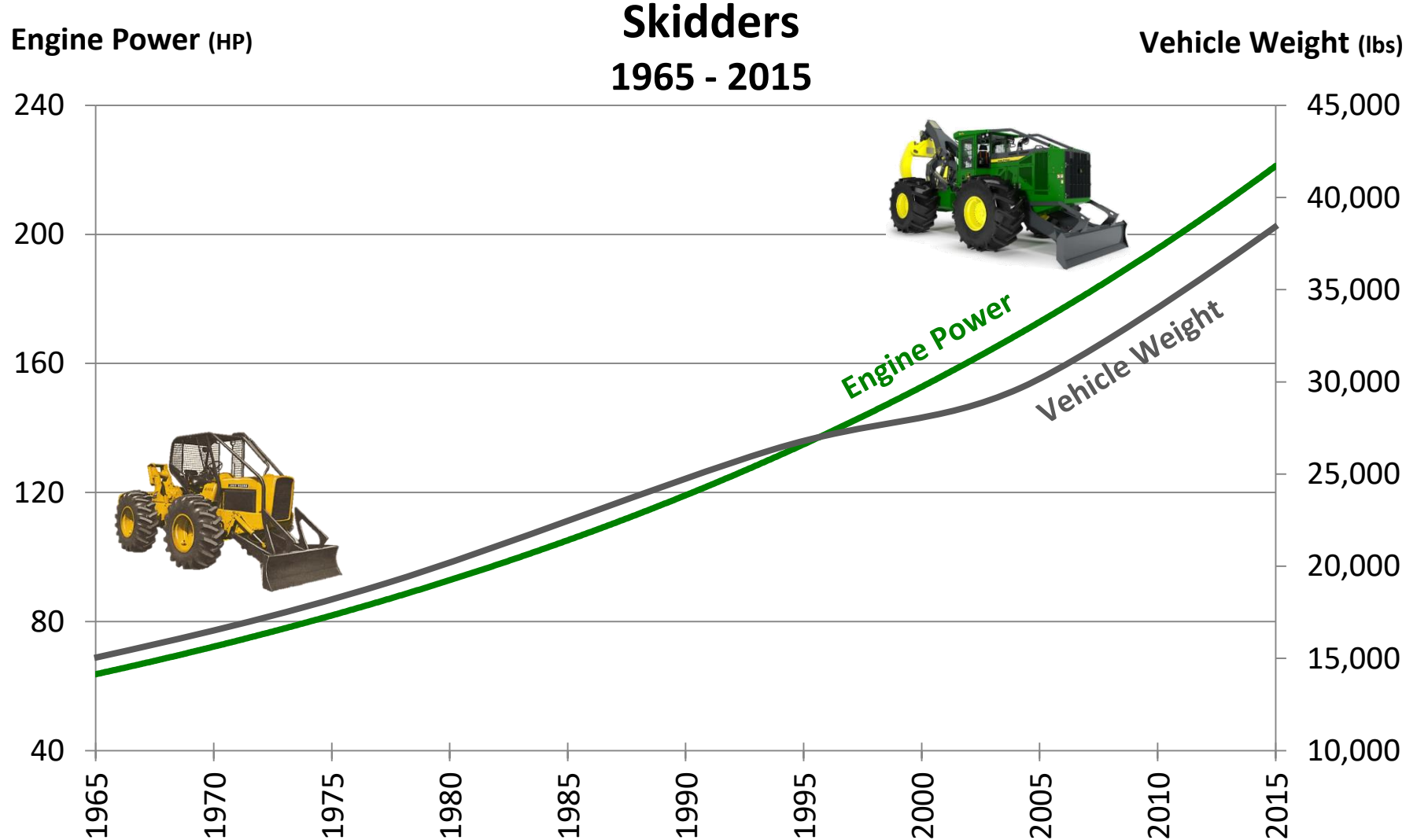
TIMBERMANAGER™

Elevate your business & profitability to new heights



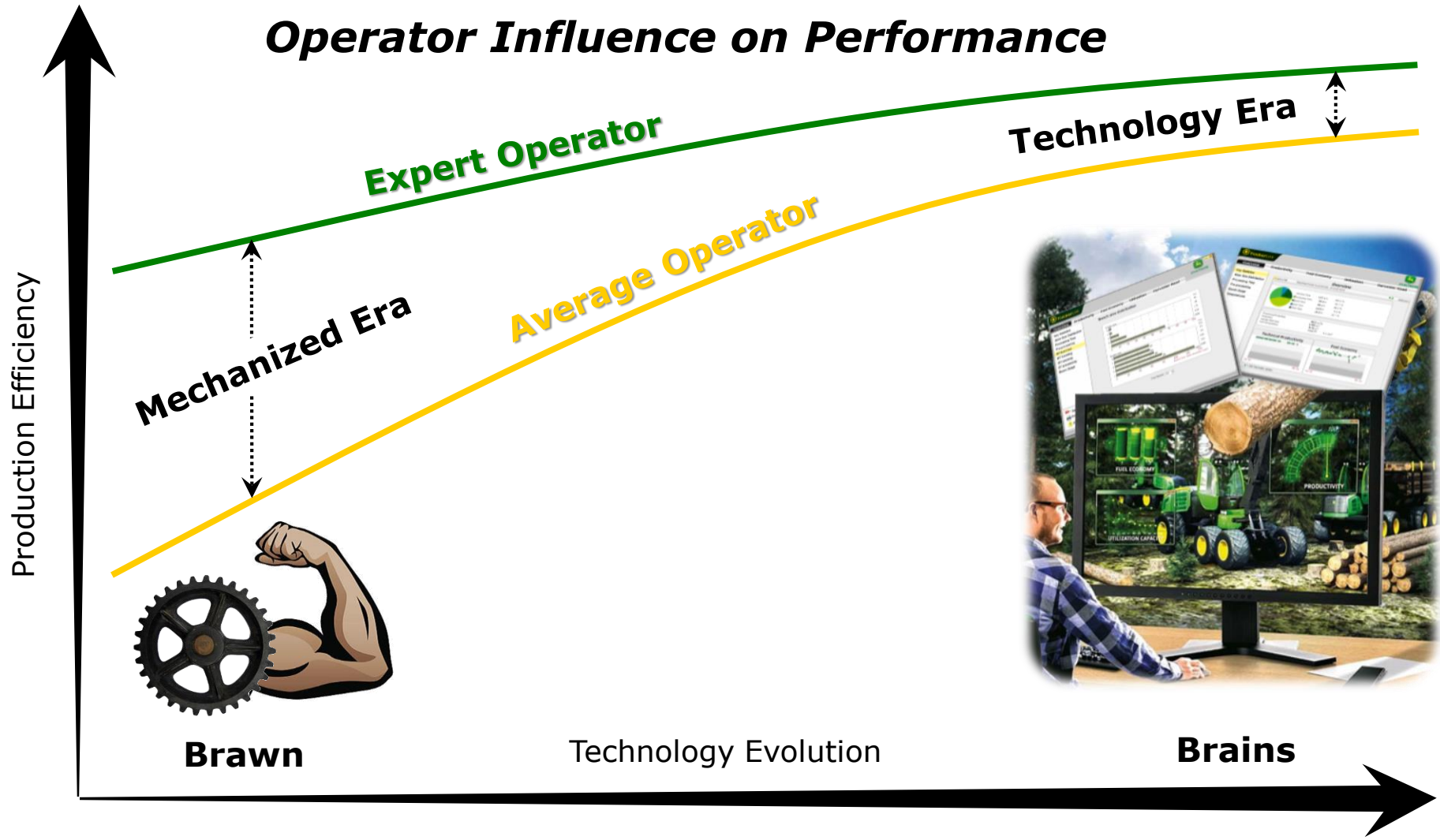
JOHN DEERE

"Mechanization" Era: Bigger – Stronger – Faster



"Technology" Era: **E**asier – **S**marter – **P**recise

Operator Influence on Performance



JOHN DEERE



JOHN DEERE

Customer & Industry Need

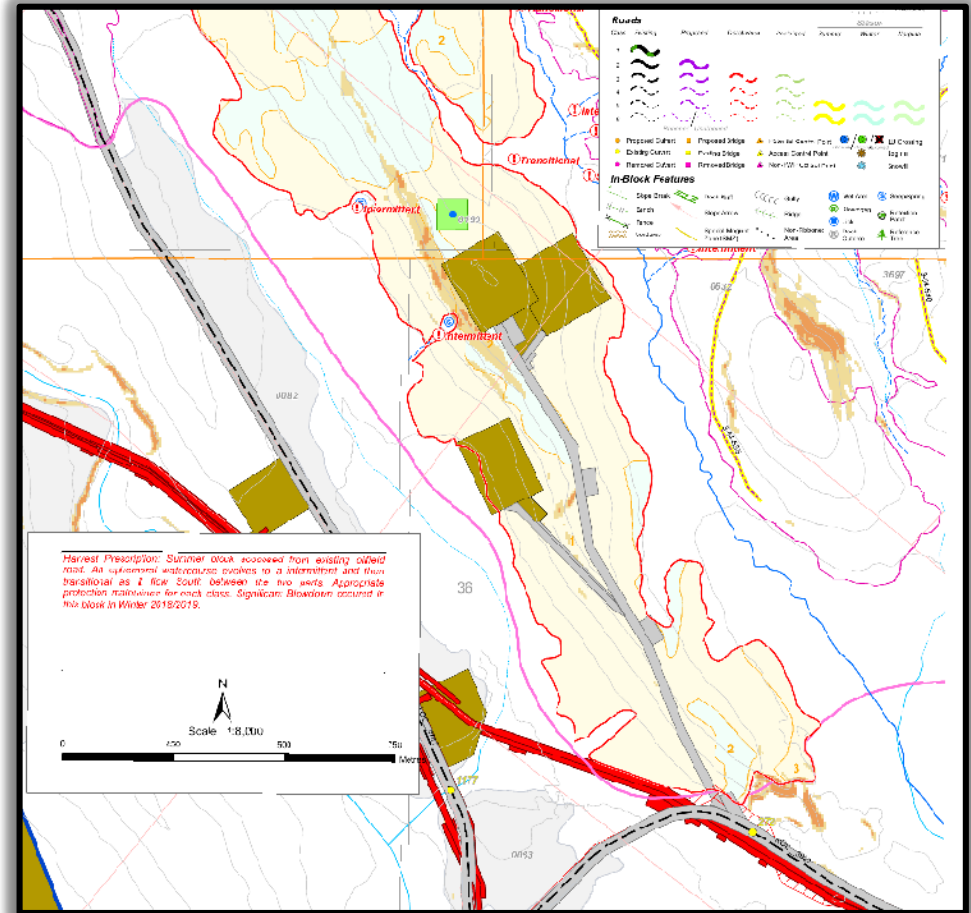
- *Improve Planning, Communication, & Execution*
- *Reduce wasted time, effort, & resources*





Making clear & efficient management decisions

- *Where are the landings?*
- *How much production is at each landing?*
- *Which landings are staffed?.. & what sorts are available?*
- *When & where should the trucks be deployed?*





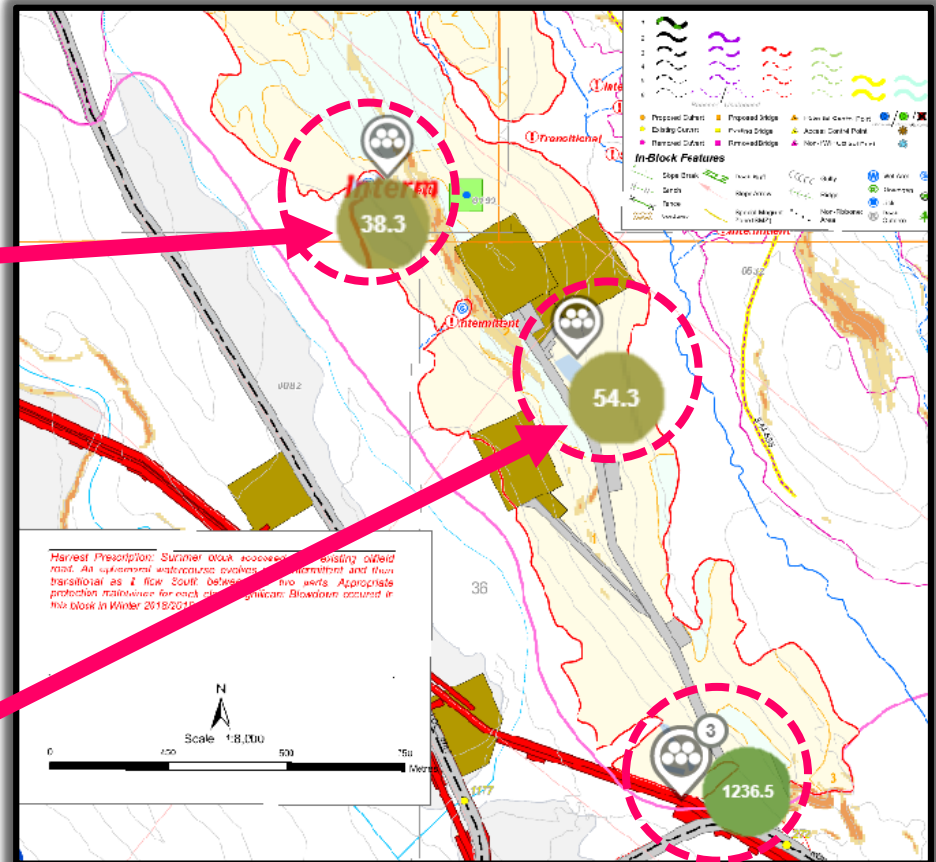
JOHN DEERE

Operations Management

New levels of landing and inventory awareness

^ Roadside Landing D	38m ³
Small16	20m ³
Large16	9m ³
Pulp	4m ³
Random	2m ³
Small12	2m ³
Small14	1m ³
Large14	<1m ³
Small10	<1m ³
Large12	<1m ³

^ Roadside Landing E	54m ³
Small16	42m ³
Small14	3m ³
Small12	3m ³
Random	3m ³
Pulp	2m ³
Small10	<1m ³
Large16	<1m ³

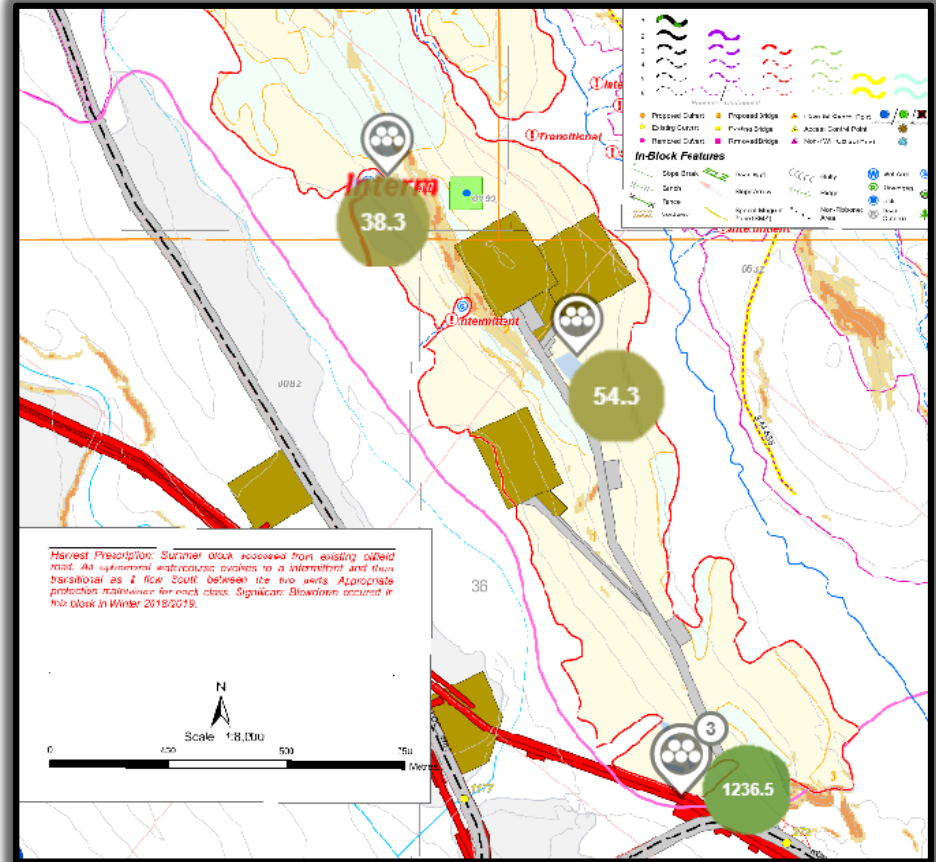
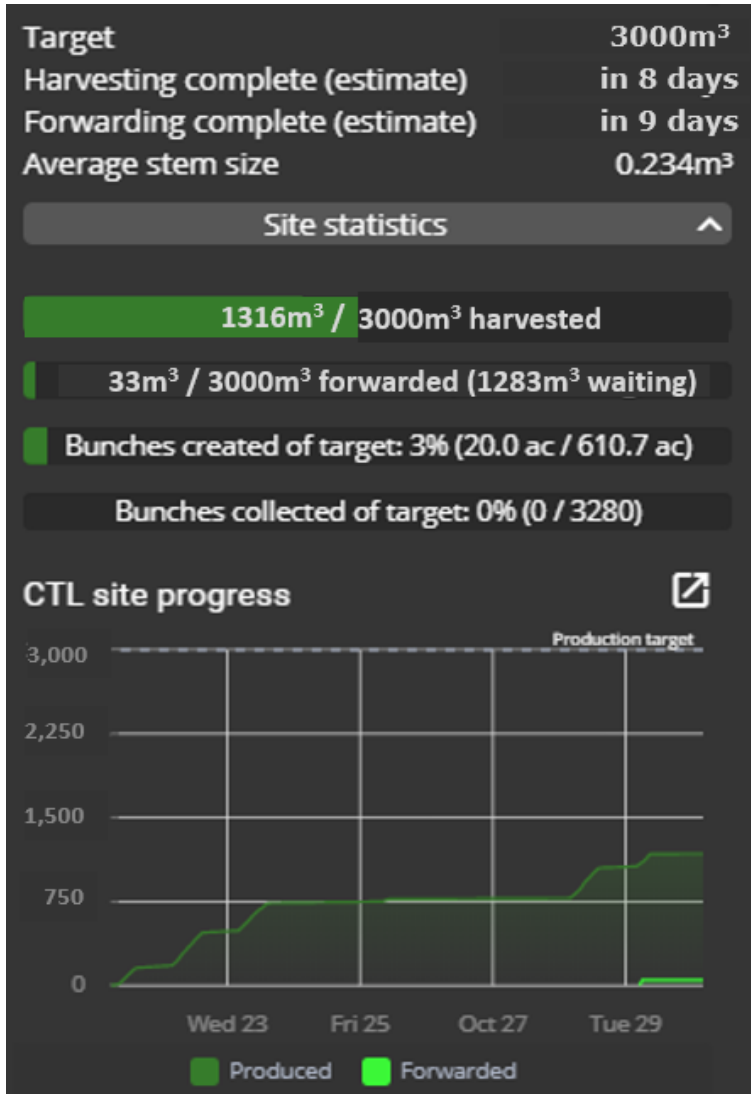




JOHN DEERE

Operations Management

Make effective decisions with intelligent data!!!



Operational insights from stumpage to mill

- Site prep → Tree → CTL stems → Store/load → Mill
- Estimate → Stem count → Volume → Tons → Cash



JOHN DEERE

Business Optimization



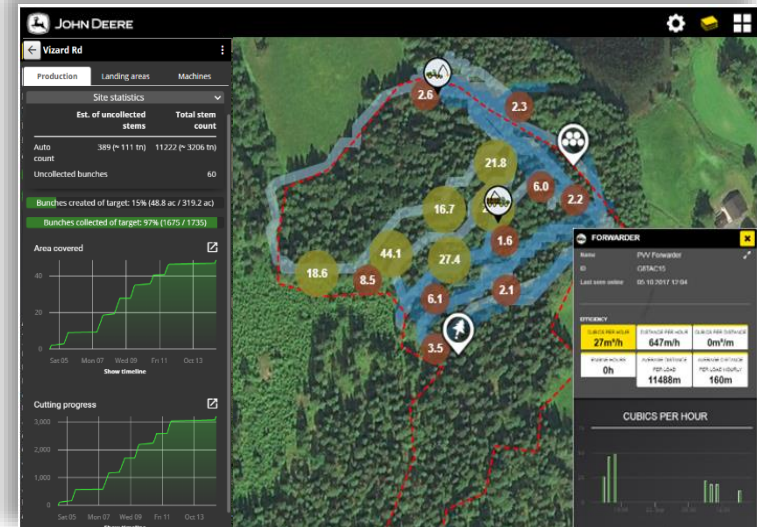
TimberMatic™ Maps

- On-board jobsite visualization
- *Turn guesswork into productive work*
- *Maximize fuel, time, & resources*
- *Add minutes to gain hours*



TimberManager™

- Real-time operation management
- For PCs & mobile devices
- Mapping, monitoring, & statistics
- *Transform data into opportunity*



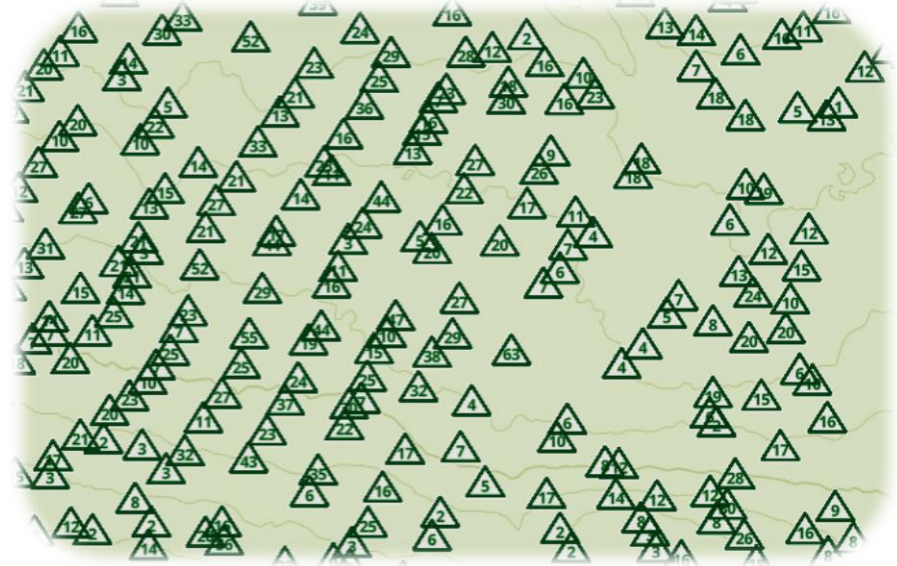


JOHN DEERE

Key Features

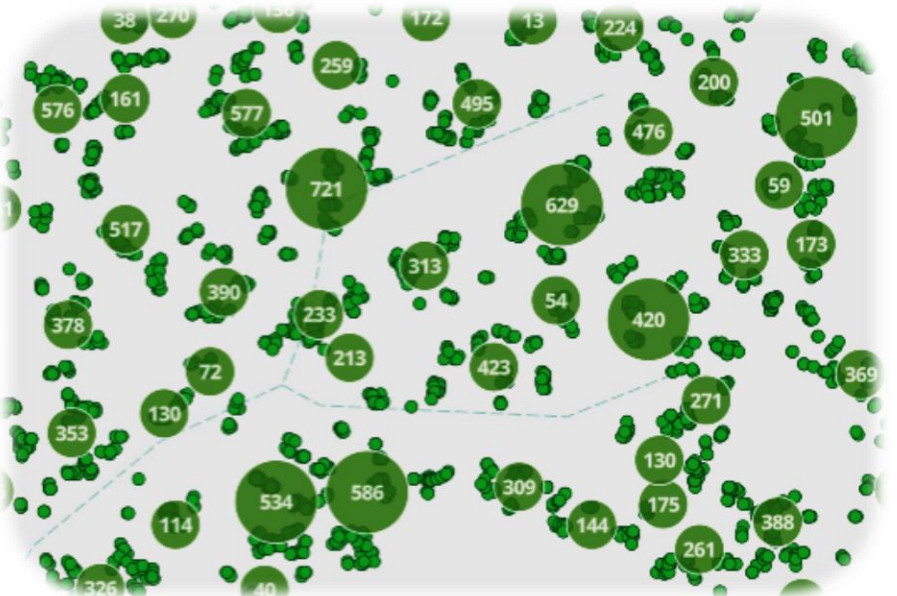
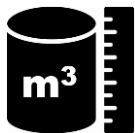
Full-Tree Features

- “**FB**” Fell trees into bunches
- “**S**” Transport bunches to landings
- Production: count, species
- Calculated estimates: volume & weight



Cut-to-Length Features

- “**H**” Process trees into stems
- “**F**” Transport stems to landings
- Production: count, volume, species, sorts
(StanForD files: drf, prd, pri, prl, stm)






Cut-To-Length Geo Layers

Site Data (.maps)

- Stems
 - Tracks
 - Pitch & roll
 - Landings
 - POI, LOI, & AOI
- 



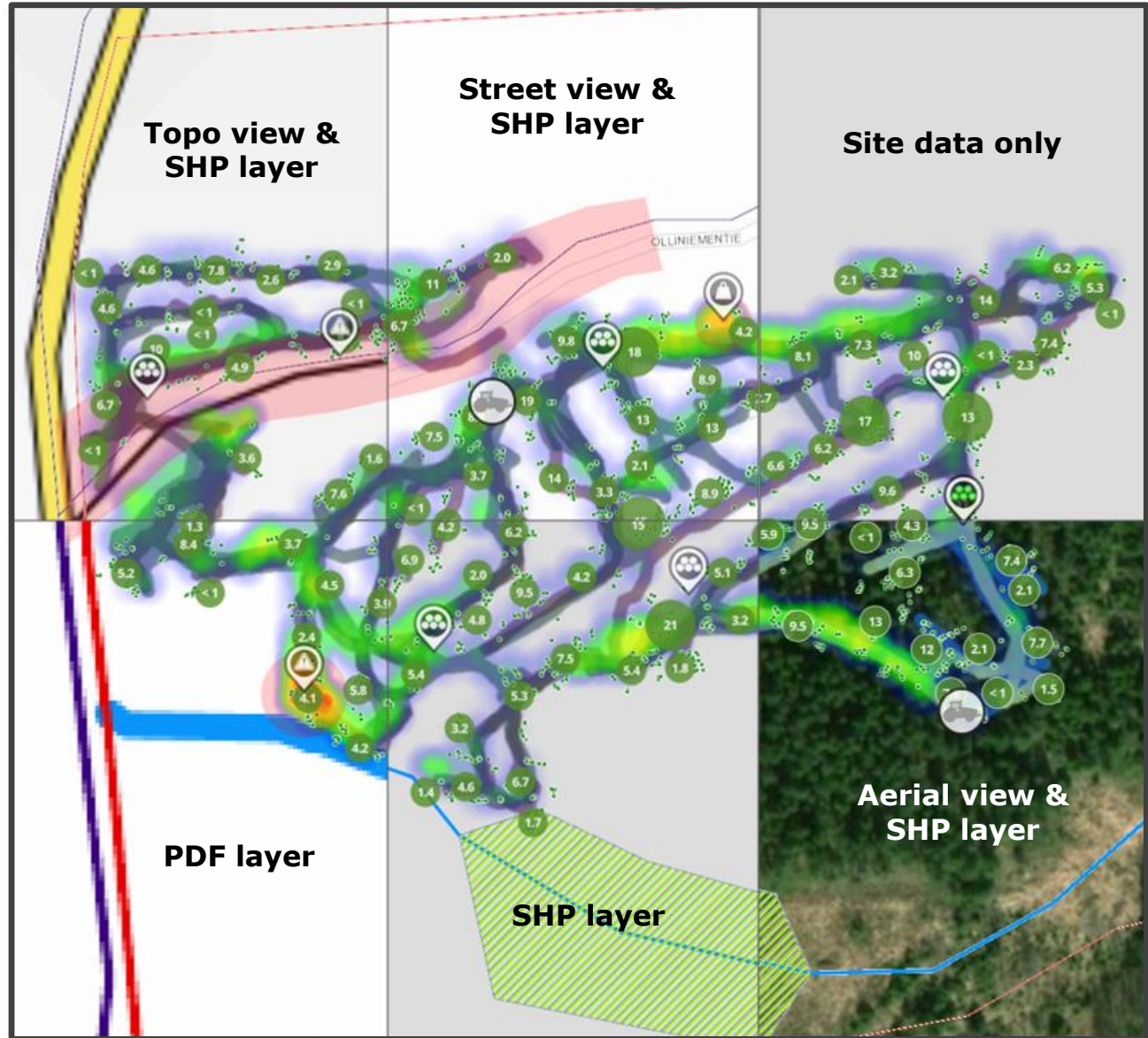
Site Attributes

- (mpk, nav, pdf, shp.zip)
 - Boundaries
 - Roads
 - Streams
 - Etc
- 
- A glass jar of red jam, likely strawberry, with a metal spoon resting against it. In the background, there are some fresh ingredients including a whole onion, a sliced onion, and some green herbs.



Basemap Imagery

- (pdf, tif, tpk)
- Aerial
- Topo
- Street
- Etc





JOHN DEERE

Full Tree Geo Layers

Site Data (.maps)

- Bunches
- Stems
- Landings
- Tracks
- POI, LOI, & AOI



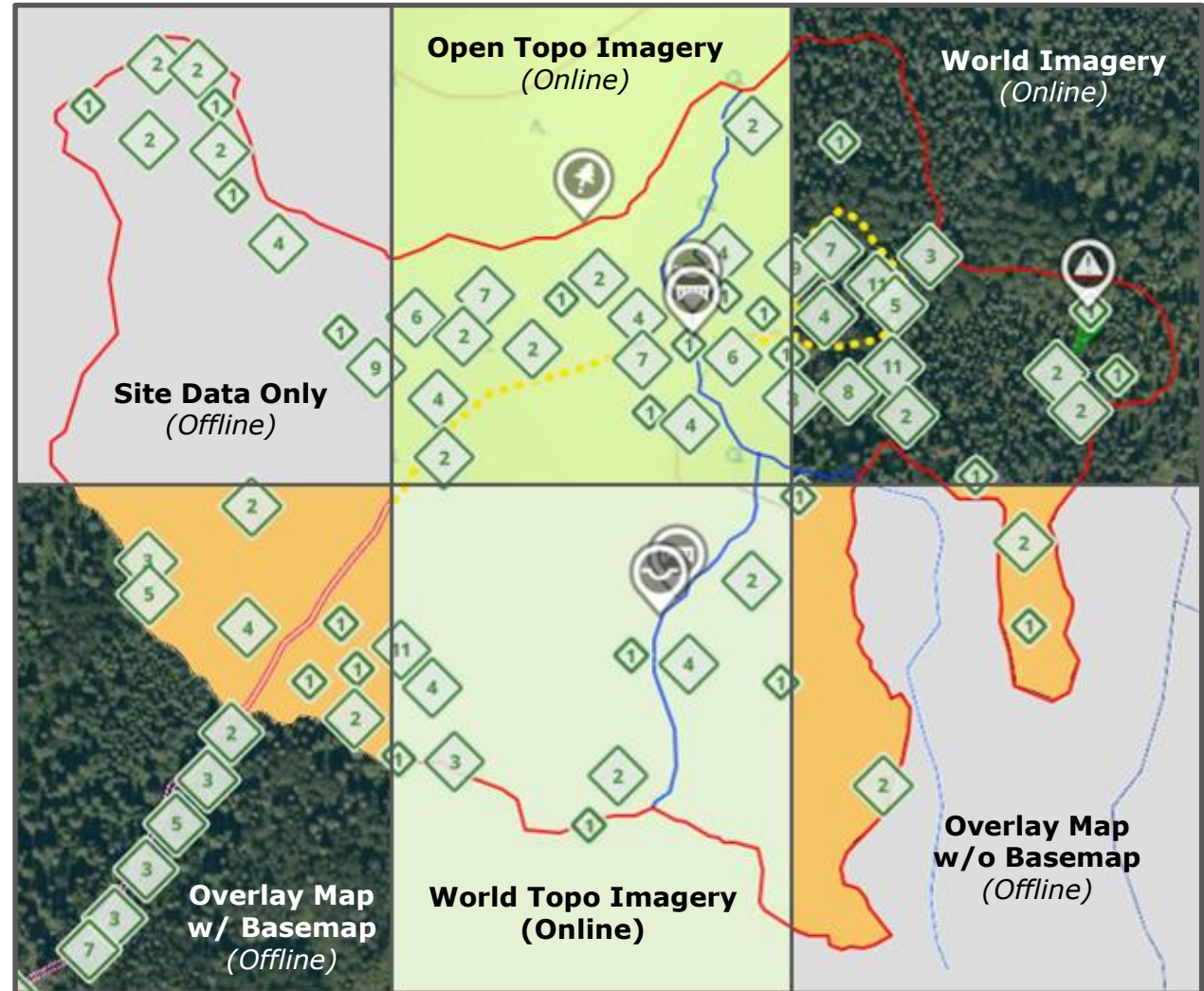
Overlay Maps

- (mpk, nav, pdf, shp.zip)
- Boundaries
- Roads
- Streams
- Etc



Basemap Imagery

- (pdf, tif, tpk)
- World Imagery
- World Topo
- Open Topo
- Etc

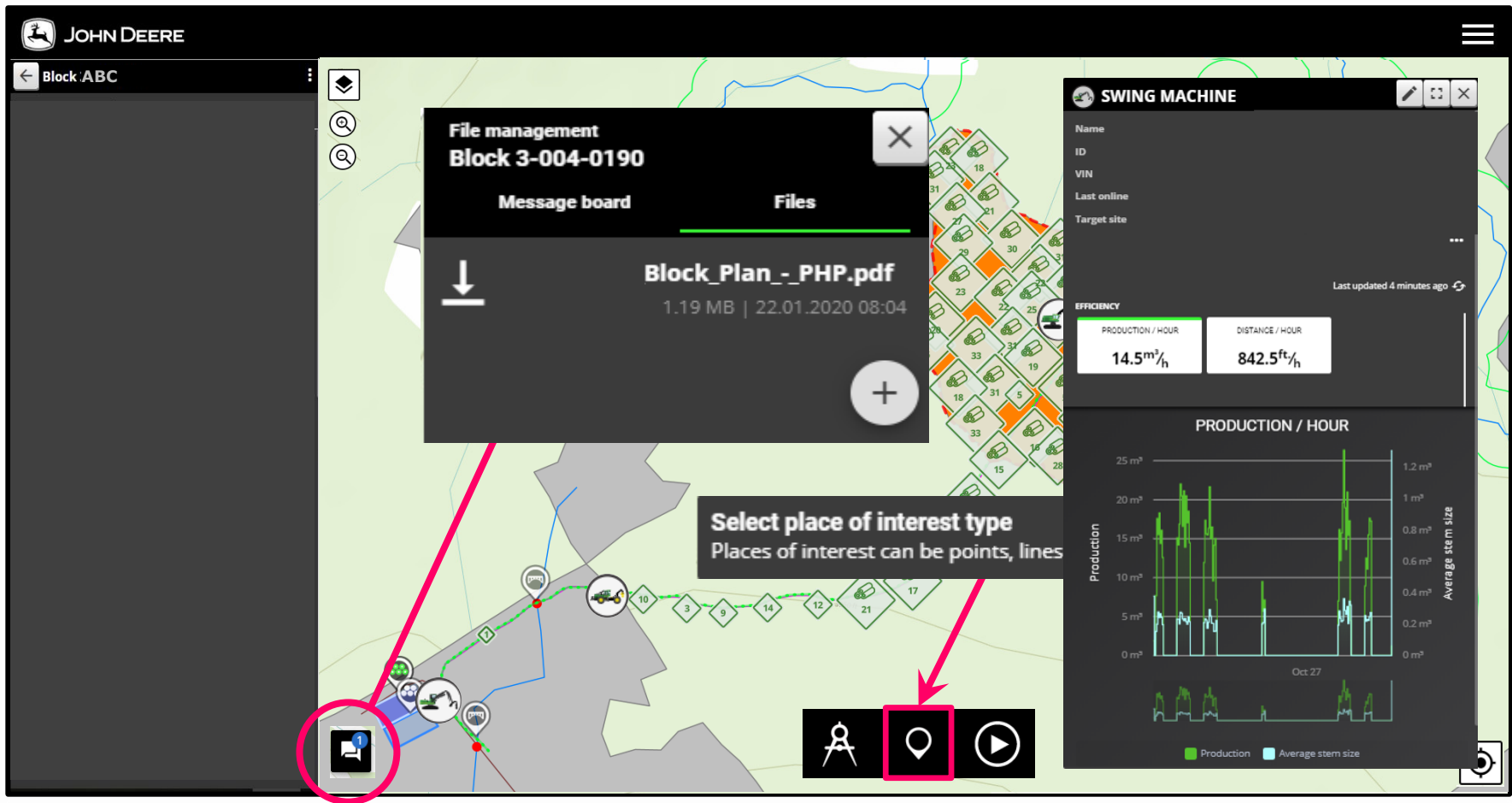




JOHN DEERE

TimberManager™

- Simple customized map creation: online imagery, boundaries, zones, landings, POI
- Import ready-made map files: pdf, tif, shp (.zip), nav, mpk, tpk
- Real-time operations status & analytics: machines, production, landings, & jobsite
- Group messaging and file sharing between the office & all machines on the jobsite

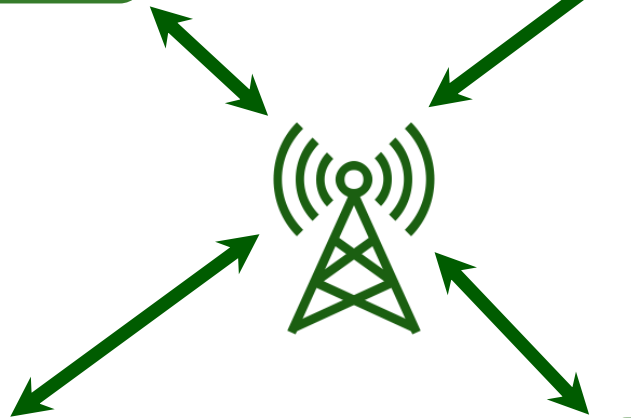




JOHN DEERE

System Architecture

Fell / Process (Production)



Transport & Stack

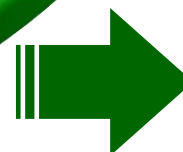
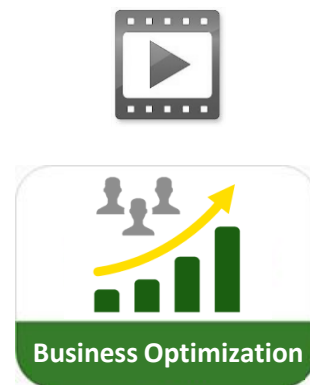
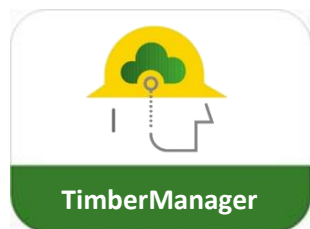
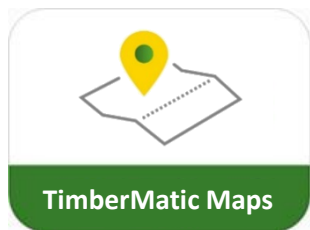


Stack & Load



JOHN DEERE

Insights to Maximize Opportunity





JOHN DEERE